



Spooky² Quick Guide

Spooky2 Team
June 2022

www.spooky2.com

Our Mission: ●

We will eliminate all illnesses and needless suffering.

Our Vision: ●

We aim to empower people to take control of their own health and live long, healthy, fulfilling lives with happiness and joy.

Our Value: ●

We value love, compassion, and honesty over profit.

Thank You

Dear Customer,

Thank you for adopting Spooky2! We are writing this letter to express our sincere gratitude, and to help you get the maximum performance from your Spooky2 system.

It has been more than 9 years since our birth. We went through many ups and downs during this time, but never gave up our commitment towards providing value through research and innovation. Spooky2 could never have gone this far without your support and trust. We shall continue to grow with your help, and promise to continue our charitable fund to help people in need.

We have abundant supportive documents and videos on our website to help you through the setup and operation of Spooky2, and a strong online support system. Some of these are listed below:

Spooky2support.com. A text-searchable information centre set up to answer common questions. We built this website with the purpose of helping our users. Useful information from multiple sources has been put in one convenient location. We classified this information into different categories such as Spooky2 Plasma, Spooky2 Software, Spooky2 generators, and so forth. Users can directly search their category of interest to find relevant and helpful information.

Spooky2Videos.com. This site has well organized hardware and software training courses, video tutorials, guides, reviews, and user tips to help you learn quickly. It also has SAMA webinar. Every week there's a SAMA expert answering your questions in the area of their expertise, including natural health, nutriology and psychology, etc.

[Spooky2 Forum](#) and [Facebook](#). Groups set up for online support and discussion. The Forum has more advanced users and is generally tech-oriented, whilst the Facebook group is better suited for new users. Currently, we have over 26,515 users in the Forum and over 48,000 users in the Facebook group. We strongly recommend our users to come to these two platforms to interact with other users. Many advanced users are willing to answer questions and share

their experiences. People with the same health issues may also talk and share their learned knowledge. Perhaps you have information that you can also share with others.

Live Chat service. Our well-trained customer support crew can help users with software and hardware problems and concerns. They will provide prompt answers to your questions. This service is generally sales-oriented, so for technical questions we recommend searching for the answers on spooky2support.com, the Forum and Facebook group first. Almost all questions have been previously answered elsewhere.

Disease Dictionary. We have compiled this Disease Dictionary for Spooky2 users who are suffering from various diseases. Inside you will find valuable information and resources on hundreds of different diseases. These are all real experiences shared by Spooky2 users on the Spooky2 Forum and Facebook Group. It will be updated continuously and released every week. You can download the Disease Dictionary from here:

<https://www.spooky2-mall.com/blog/disease-dictionary/>.

There are also a large number of online blogs, each filled with valuable information. Our YouTube channel (Spooky2Rife) and email facilities are designed to offer you first-class support.

Thank you for helping Spooky2 grow. We will never forget our mission, vision and value, and will continue to deliver the best products and services to you.

Thank you!

Best wishes,
Spooky2 Team

A handwritten signature in black ink, appearing to read "John".A handwritten signature in black ink, appearing to read "Echo".

TABLE OF CONTENTS



Welcome	01
Precautions	01
Important Advice	02
Spooky2 Overview	02
Hardware	03
• Spooky2 Discrete Accessories	03
Software	05
• Simple Installation Guide	05
• Windows Warnings	06
• Possible Windows Install Errors	07
• Software Interface	07
Treatment	09
• Remote Mode	10
• Contact Mode	13
• Cold Laser	19
• PEMF Coil	22
• TENS Internal Electrode	23
• Spooky2 Central/Spooky2 Plasma	26
• Spooky2 Pulse	29
• Colloidal Silver	34
• GeneratorX Pro	38
• Spooky2 Scalar	67
• Spooky2 Scalar Digitizer	76
Tips	85
• Treatment Choices	85
• Protocols	85
Legal Notice & Disclaimer	86
Spooky2 Software License	87

Welcome...

Welcome to the Spooky2 Quick User's Guide. This Guide allows you to quickly and easily start using Spooky2 to kill pathogens and heal organs and systems. Now take control.

Precautions

To use the Spooky2 Rife System safely you must:

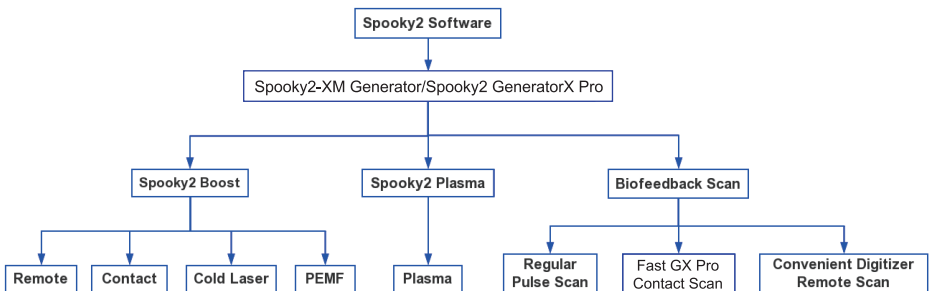
1. Never unplug it while in use. Always stop it in the software, and then switch off the generator.
2. Do not adjust the Spooky2-XM generator front panel controls. The Spooky2 Rife System is designed to be totally controlled by the software.
3. Only use an approved 5v power supply for your Spooky2-XM generator.
4. Only use an approved 12v power supply for your Spooky2 GeneratorX Pro.
5. If you suffer with heart problems or wear a pacemaker or other electrical implant, please use Spooky2 Remote Mode ONLY.
6. If you suffer from impaired liver or kidney functions, please exercise caution when using Spooky2.
7. Frequency generation systems should NEVER be used while pregnant since official testing has not been performed.

Keep Spooky2 equipment out of the reach of children.

Important Advice

1. Run Terrain Protocol once before anything else - particularly important for Spooky2 Plasma users. This protocol is also built into the Cancer Protocol and Morgellons & Lyme protocol.
2. Note that the Morgellons & Lyme Protocol is a very efficient wide spectrum antibiotic / antiparasitic.
3. Do not run the same program on different generators at the same time. Stagger the programs by at least 5 minutes.
4. Drink plenty of pure water to help conductivity and toxin elimination.
5. When you kill organisms, make sure you detox. Otherwise, a Herxheimer reaction – nausea, joint / lower back pain, fatigue, etc - may ensue. If so, run the following programs: Lyme Herxheimer Helper 1 (XTRA), Lyme Herxheimer Helper 2 (XTRA), Detox Toxins Elimination 1 (XTRA), Detox Toxins Elimination 2 (XTRA), Lymph Drain Circulation (XTRA).

Spooky2 Overview



Spooky2 is the most highly advanced and versatile Rife machine in the world. The brain of this system is the Spooky2 software, freely downloadable from www.spooky2.com.

It runs on a Windows PC - even a cheap netbook. Windows 7, Windows 8, Windows 8.1, or Windows 10, Windows 11 is required.

The heart of this system is the Spooky2 generator. It is a frequency gener-

ator. This little generator unlocks the incredible power of Spooky2.

There are five main transmission methods in Spooky2: Remote, Contact, PEMF, Cold Laser, and the powerful Plasma. You can connect the first four directly to Spooky2 generator or through Spooky2 Boost, but Plasma can only be driven by Spooky2 Central /Plasma.

Spooky2 also has a well-developed biofeedback system. Biofeedback scans find the right frequencies for the pathogens in your body. The correct frequencies can work miracles. There are two ways to do biofeedback scans: Spooky2 Pulse and Spooky2 GeneratorX Pro.

Hardware

Please check your products according to the packing list. And the following pictures will help you recognize the products.

Spooky2 Discrete Accessories



1. Spooky2-XM Generator



2. Generator X Pro



3. Spooky2 Scalar



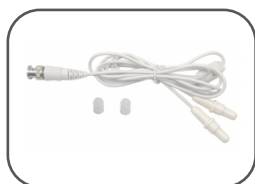
4. Spooky2 Scalar Digitizer



5. Spooky2 Boost v3.1



6. Spooky2 Remote v2.0



7. Spooky2 Cold Laser
Twin



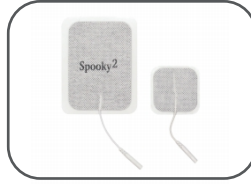
8. Spooky2 Cold Laser
Wrist



9. Spooky2 Tens
Internal Electrode



10. Spooky2
Tens Contact Kit



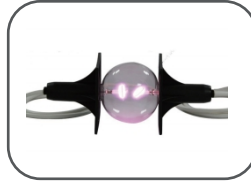
11. Spooky2 Large Tens
Pad / Spooky2 Tens Pad



12. Spooky2 Stainless
Hand Cylinders



13. Spooky2
PEMF Coil



14. Spooky2 Phanotron
Plasma Tube



15. Spooky2 Straight
Plasma Tube



16. Spooky2 Pulse
Earclip Option



17. Spooky2 Pulse
Fingerclip Option



18. Spooky2
Pulse Ear Clip



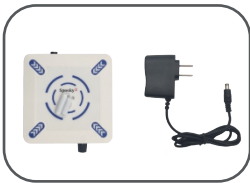
19. Spooky2
Pulse Finger Clip



20. Spooky2
Sample Digitizer



21. Spooky2
Silver Rods



22. Magnetic Stirrer



23. Spooky2 10
Port USB 3.0 Hub



24. Spooky2 Quad
5V Power Supply



25. TENS Cable



26. Spooky2 USB
Filter Cable



27. Spooky2 BNC
Filter Cable

Software

Full Package:

Spooky2 Starter Pack

♥ Contains the latest Spooky2 software installer, the Spooky2 User's Guide, the Spooky2 Quick Guide, ChainEditor 2.1, and the Spooky2 Resources Directory (all separately linked below).

We recommend you to download the Spooky2 Starter Pack. This contains the latest software and User's Guide.

Simple Installation Guide

1. Download the software:

Go to www.spooky2.com/downloadspage/ and click on the Spooky2 Starter Pack to download it.

2. Install the software:

A. Go to either your Download, Quick Access or Recent Folder and extract all files from the downloaded Spooky2 Starter Pack zip file.

B. In the new window that opens up, go into the Spooky2_Starter_Pack folder.

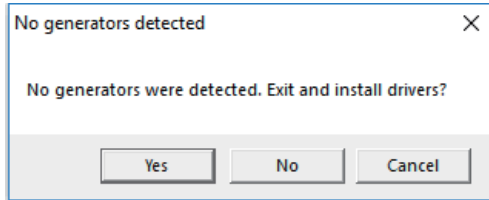
C. Go into the Spooky2 setup folder. Then double click on the Spooky2 setup application and follow the screen prompts.

D. When the installation is done, tick “Yes, launch the program file,” then click the “Finish” button.

E. Spooky2 will launch. You will see a “No generators detected” alert.

F. Click “Yes” to install drivers, and the driver installer will launch.

Please follow the screen prompts.



When the driver installation for the Spooky2-XM generator completes, click Finish. Now you have Spooky2 software successfully installed.

Note:

If you would like to update your Spooky2 software in the future, please download the Spooky2 Software Full Installer. You can directly install the new Spooky2 software version, as it will overwrite the previous version automatically.

Windows Warnings

There are two very important settings in Windows that you need to be aware of when using Spooky2:

1. PC Sleep Settings:

When your PC sleeps or hibernates, Spooky2 will simply suspend, which will cause Spooky2 to lose control over the generators. The generators will freeze and will become locked transmitting the same frequency. It will not be good for your health.

To fix this, go to Control Panels > Power Options > Change when the computer sleeps, and set everything except the screen to Never. Alternatively, you can use a dark screen saver to extend display life (Control Panels > Personalization > Screen Saver).

2. Windows Update Reboots:

If your PC is also used for the internet, Windows can download and install updates automatically. It can then quit Spooky2, install the updates, and restart your PC – ending your entire Spooky2 session without any warning to you.

To fix this, go to Control Panels > Windows Update > Change settings and choose anything other than Install updates automatically. If you don't want to lose this auto-install functionality, you can simply switch off your modem/wi-fi router or unplug your ethernet cable before going to sleep or leaving your home. Please note on Windows 10 you may not have the option of turning off updates.

Possible Windows Install Errors

1. Runtime Error xxxx: Invalid Port Number:

This is a Windows error and normally indicates that the PC is confused about exactly what's connected to its USB ports. It's usually resolved by restarting the PC.

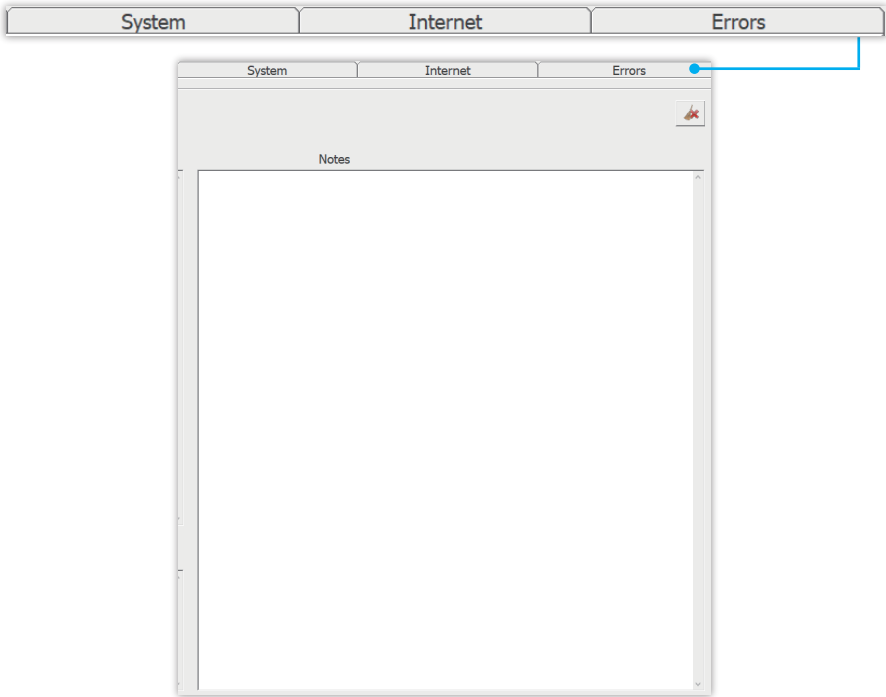
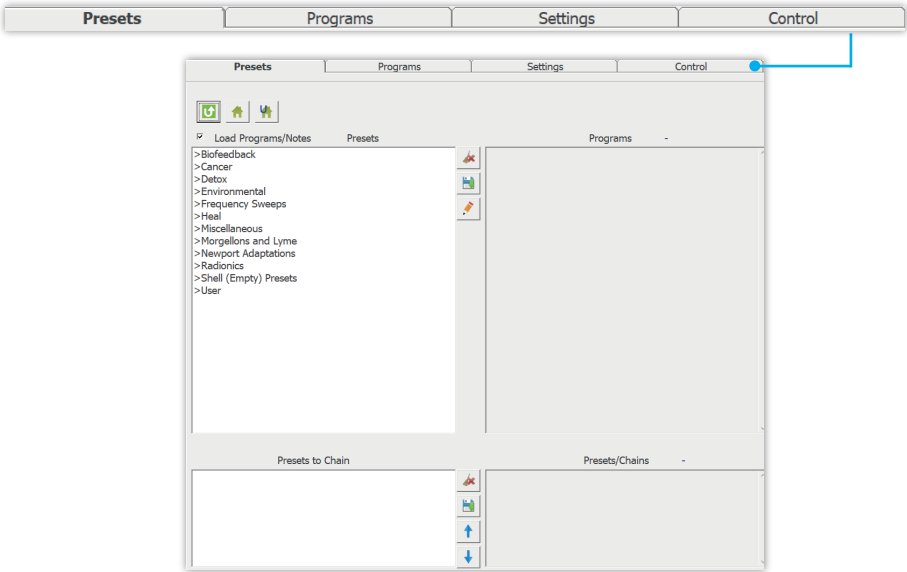
2. Remedies for Driver Problems:

Sometimes, an incorrectly configured PC or other software already installed can interfere with driver installation calls. You can fix this by installing drivers manually. Here's how:

Click the Utils menu on the menu bar and choose Install Spooky2–XM Drivers command to install the driver. When the installation process is done, quit everything and restart your PC. Then turn on Spooky2–XM generator and launch Spooky2 software. The generator should be detected.

Software Interface

Now we'll take a look at the interface of Spooky2 software. There are seven tabs in Spooky2 software - Presets, Programs, Settings, Control, System, Internet, and Errors. The first screen you will see is the Presets tab.



Now, you are ready to set up your Spooky2 Rife System.

Treatment

To start a treatment, there are three simple steps:

1. Connect Spooky2 accessories.
2. Turn on the generator before launching the software so that the generator will be detected.
3. Launch Spooky2 software and choose presets and/or programs to run.

There are two types of presets:

1. Factory preset.
2. Shell preset.

Factory presets include software settings and programs. How to run a factory preset will be shown below in the remote mode example. And how to run a shell preset will be shown below in the contact mode example.

Tips

1. To make the generator detected by the software, it's necessary to turn on the generators before launching the software.
2. In the preset tab, (R) stands for Presets for Remote Mode; (C) stands for Presets for Contact Mode; (P) stands for Presets for Plasma Mode.



Remote Mode

Step 1

First, connect Spooky2 Boost to the generator then connect Spooky2 Remote v2.0 to the BN port of Spooky2 Boost v3.1.



Step 2

Put your DNA into Spooky2 Remote v2.0. It is recommended to use fingernails as DNA sample.

Here's how to package your nail clippings using paper stickers (included in the package):

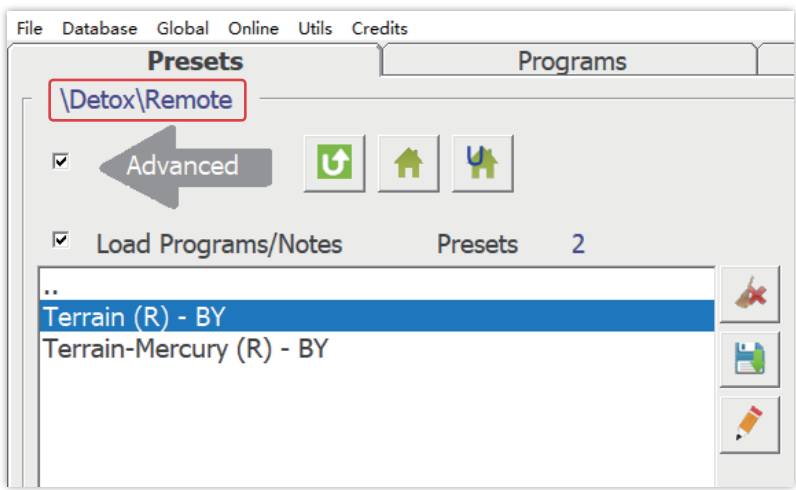
1. Put your fingernail on the sticker. Then use another sticker to cover it.
2. Write a name on the sticker.
3. Open the remote to put in your fingernail.
4. Close the remote.



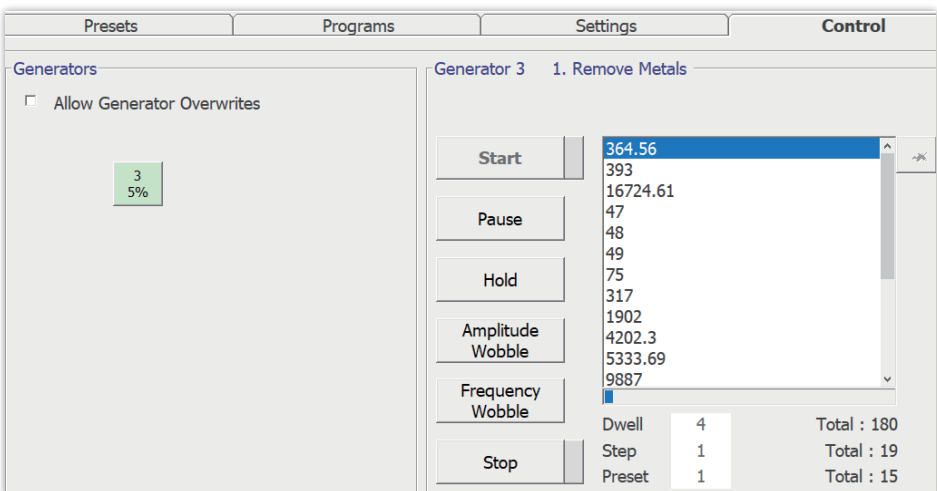
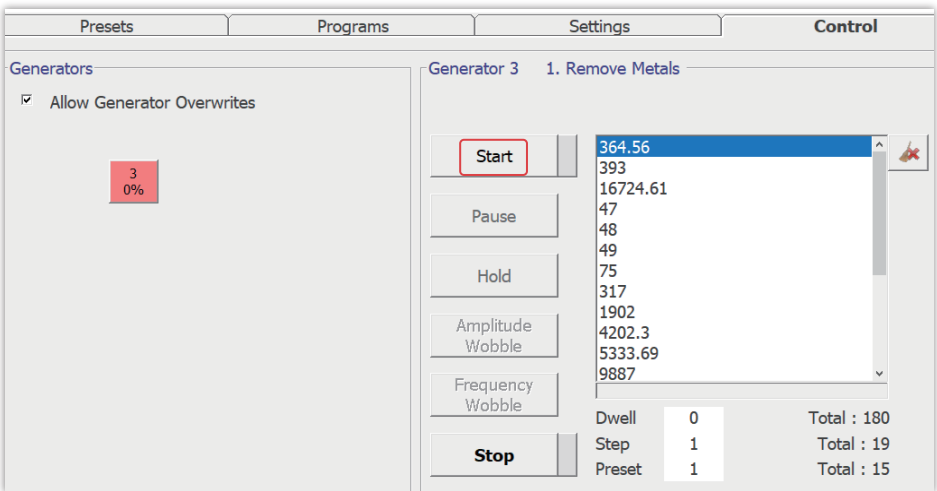
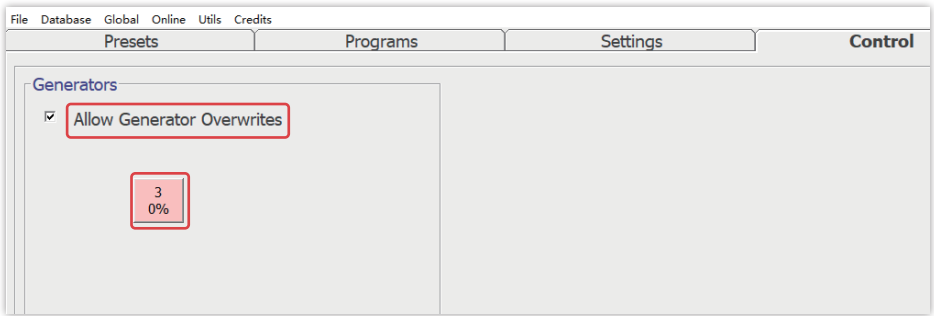
Step 3

Turn on generator and launch Spooky2 software. Here we will show you how to run a factory preset.

How to run a Factory Preset which includes the programs and settings: First select >Detox, and then the >Remote sub-collection. Next, select Terrain (R) - BY, which is a factory preset.



Go to Control Tab, tick Allow Generator Overwrites, open a generator button. After the frequencies are loaded, you can click Start button to start the treatment. Then, you will see both of the LEDs on Spooky2 Remote light up.



Note:

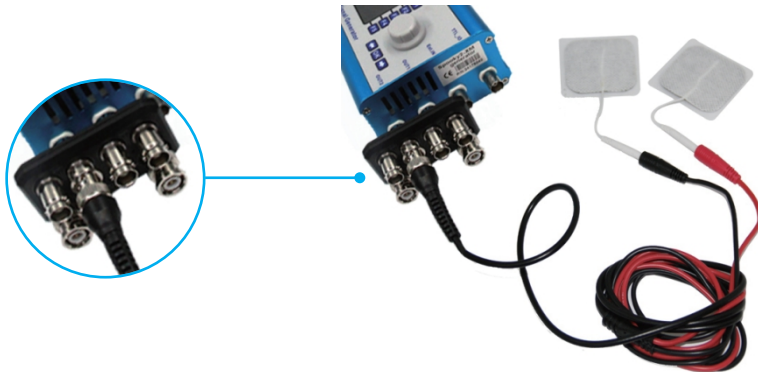
1. Any remote preset can be used on the Remote v2.0.
2. Although multiple people can be treated in the same remote simultaneously, their nails should be separated by the paper stickers.

Contact Mode

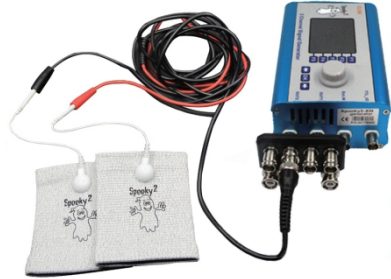
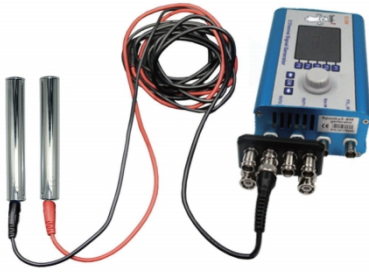
Step 1

We have many different kinds of contact accessories, including Spooky2 Stainless Hand Cylinders, TENS pads, TENS Contact kit, TENS Internal Electrode, etc. Here we will take TENS pads as an example.

First, connect Spooky2 Boost to the generator. Then connect a pair of TENS pads to the High-Power port of Spooky2 Boost.



The connection of other contact accessories is the same.

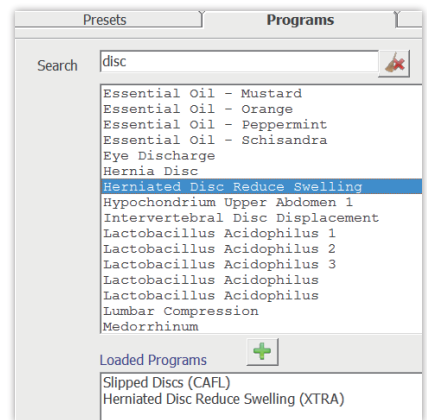
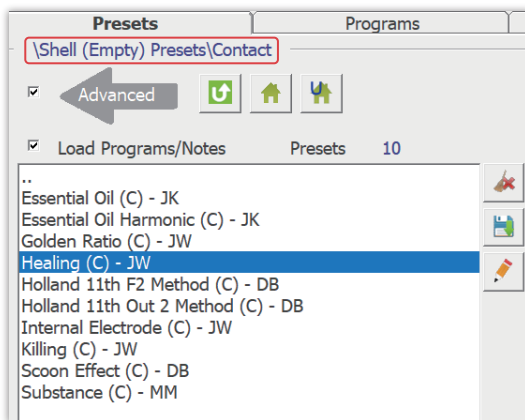


Step 2

Turn on generator and launch Spooky2 software.

You can run factory presets using contact the same way as shown in Remote mode, but here we will show you how to run a “Shell Preset”, where you need to choose your own programs.

For example, I'd like to treat my herniated disc:

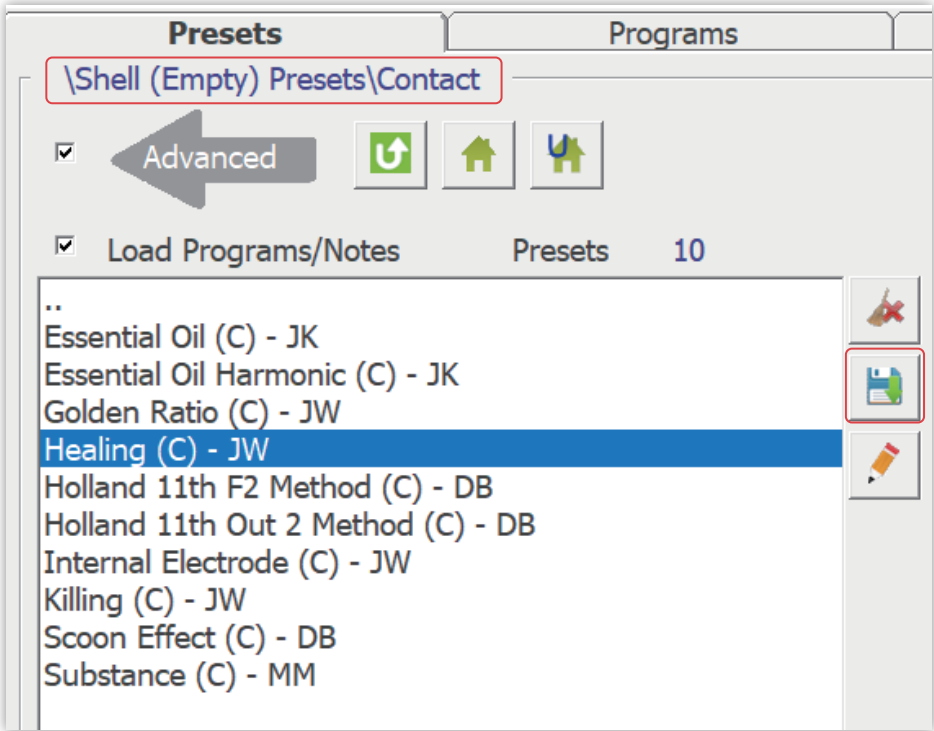


First select >Shell (Empty) Presets, and then the >Contact sub-collection. Next, select Healing (C) – JW.

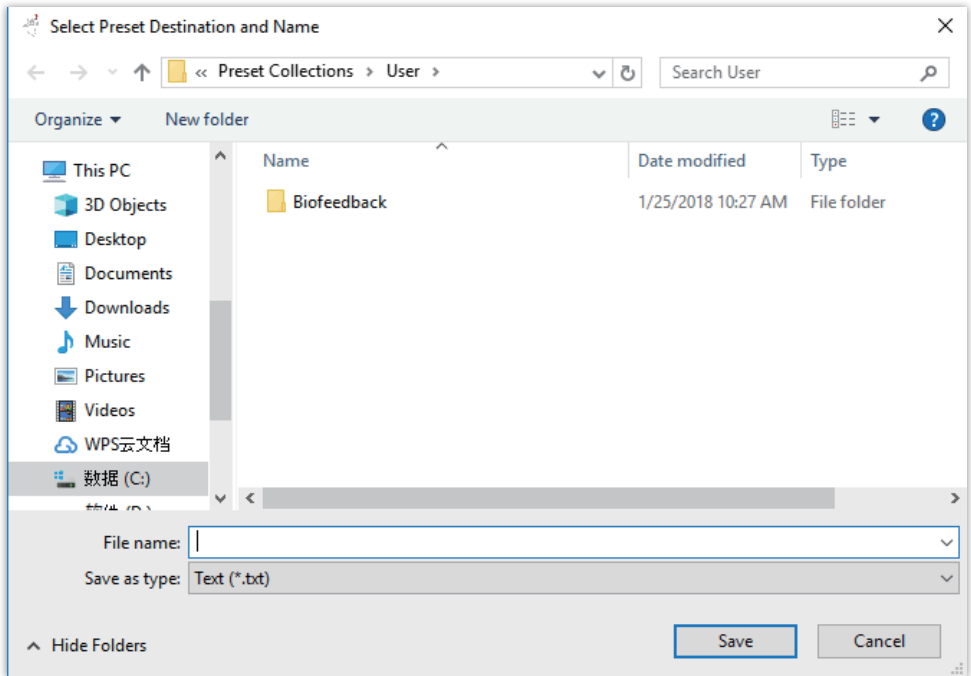
Now you must search for and load the programs you need. So click the Programs tab. Type “disc” into the Search field and get 258 results. Double click Slipped Discs CAFL, followed by Herniated Disc Reduce Swelling XTRA.

You will see that both programs are now present in the Loaded Programs column above.

Now it's time to save your work, so return to Presets and click the Save button.



Spooky2 takes you to the User folder – which is where your User preset collection is stored.

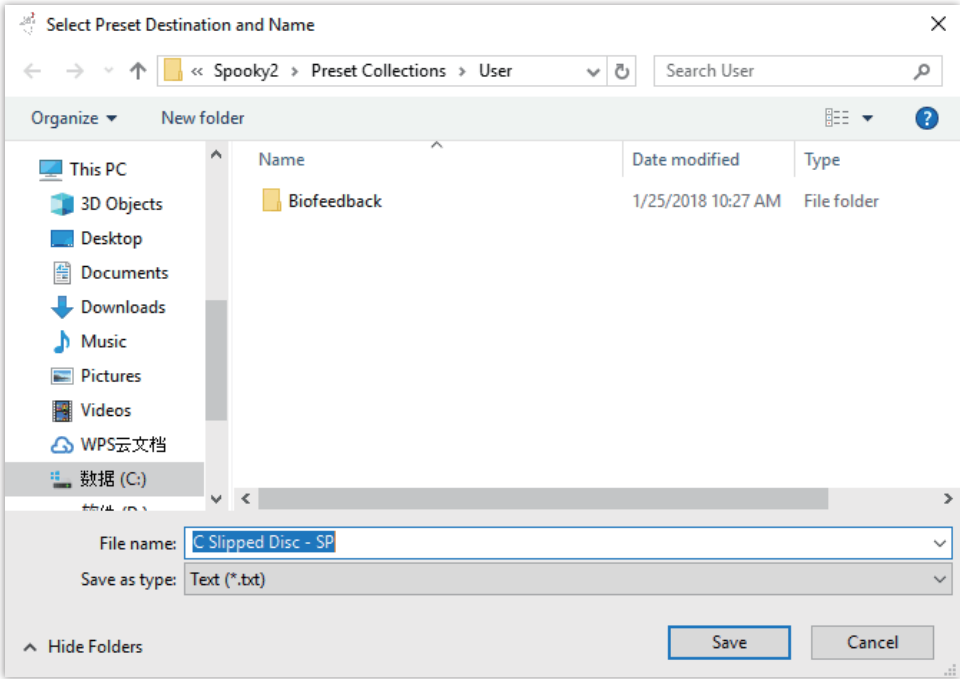


Since this is your first contact preset, the folder is empty:

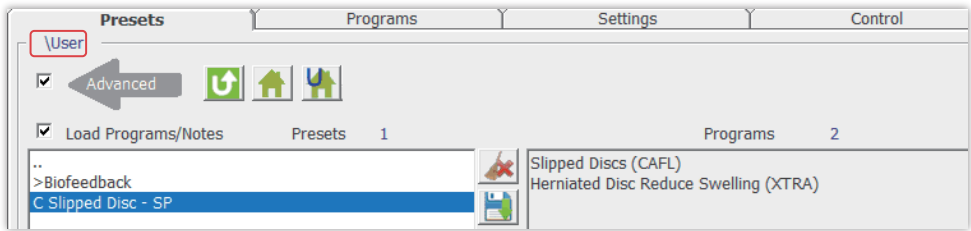
In the File Name field, type:

C Slipped Disc – SP

The “C” is to remind you that this is a Contact Mode preset. The SP is the User's initials.

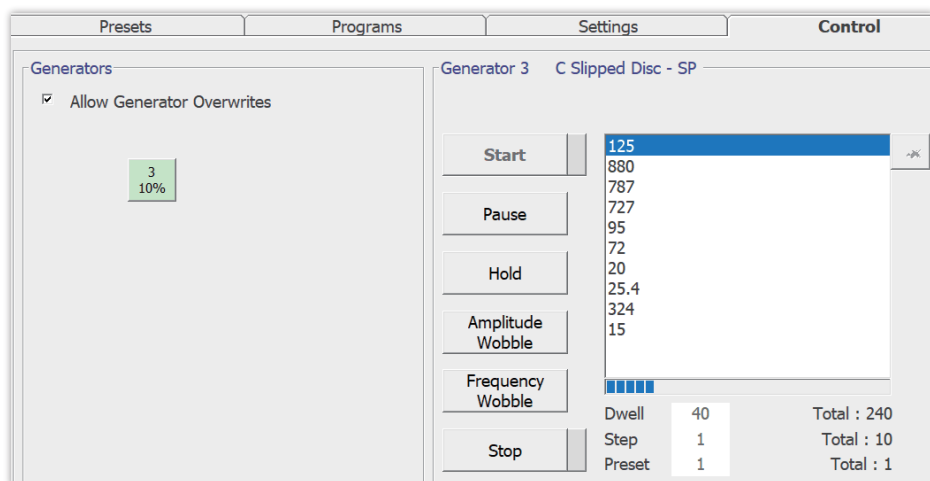
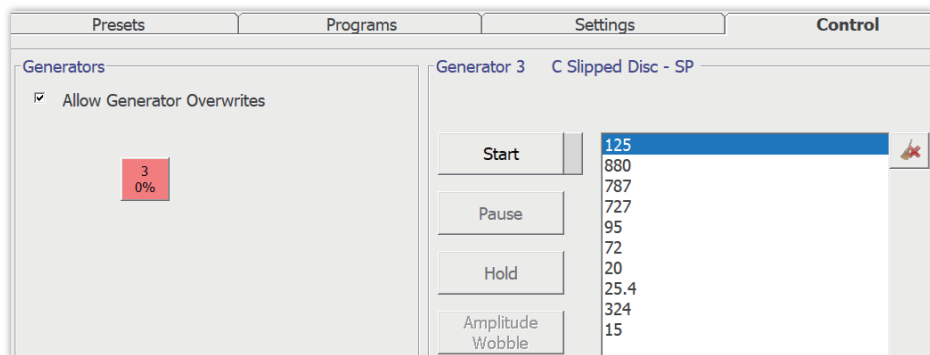


Click the User button in the Presets tab, then you see this:



Your new preset is waiting for you, so select it to load it.

Then, go to the Control tab. First, tick the Allow Generator Overwrites checkbox, then the generator button you wish to use. You can now click Start to get some relief.



Note:

1. Do not use 100% offset for contact mode.
2. Do not put TENS pads above the neck and keep them away from the heart.
3. Do not use contact mode if you have pacemaker or electrical implants.
4. Do not use more than one contact accessory on your body at a time.
5. You can use any contact presets for contact accessories in the software. Tens Internal Electrode has its own preset.
6. The procedure of running all the contact accessories is the same in the software. If the voltage is too high for you, you could use the Boost's Colloidal Silver output instead.
7. The connection of all the contact accessories is the same.

Cold Laser

Step 1

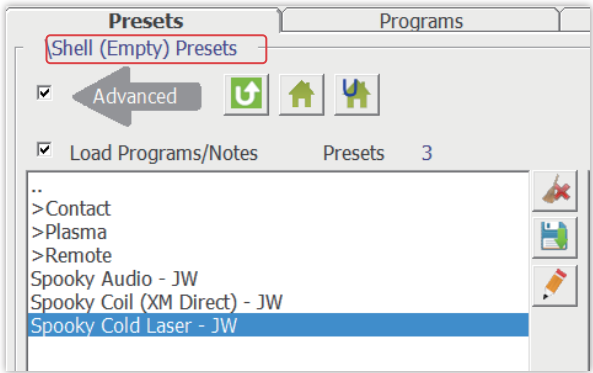
Connect Spooky2 Cold Laser Twin or Wrist to the Out 1 of Spooky2-XM generator. Do not use a Boosted output from Spooky2 Boost. You can also use the OUT1 of your Spooky2 Boost.



Step 2

Turn on the generator and launch Spooky2 software.

There are two kinds of Spooky2 Cold Laser Presets:
Spooky Cold Laser - JW
Acne (Spooky Cold Laser) - JW



Spooky Cold Laser - JW is a shell preset, which needs the user to add the programs they wish to run.

Acne (Spooky Cold Laser) - JW is a factory preset, which has been designed to treat Vulgaris Acne. The same preset can be used for other conditions because it stimulates the body's natural immune system.

Step 3

Laser Placement

Spooky2 Cold Laser Twin can be inserted directly into your nostrils, ear, navel, or acupuncture points (meridians). Placing the lasers further from the target can treat larger areas.

Laser covers are provided for Spooky2 Cold Laser Twin. Clean them with warm, soapy water, rinse, and dry between use.



Spooky2 Cold Laser Wrist is primarily designed to be strapped onto the underside of your wrist. This treats your carpal tunnel and the blood passing through the radial artery. It is also ideal to treat larger skin areas if long treatment times are desired.



For larger area treatment, you can use the strap with cold laser wrist:



Note:

1. Never shine the light of lasers directly into your eyes.
2. Do not allow children to play with Spooky2 Cold Laser.
3. Do not use Spooky2 Cold Laser in wet areas.
4. Do not use any other device to control Spooky2 Cold Laser.
5. Do not use Cold Lasers over any cancerous spots or your thyroid.
6. Spooky2 Cold Laser can also be used for imprinting water. For more details, please check the blog from **www.spooky2-mall.com**: Easy Spooky2 Frequency Imprinting.

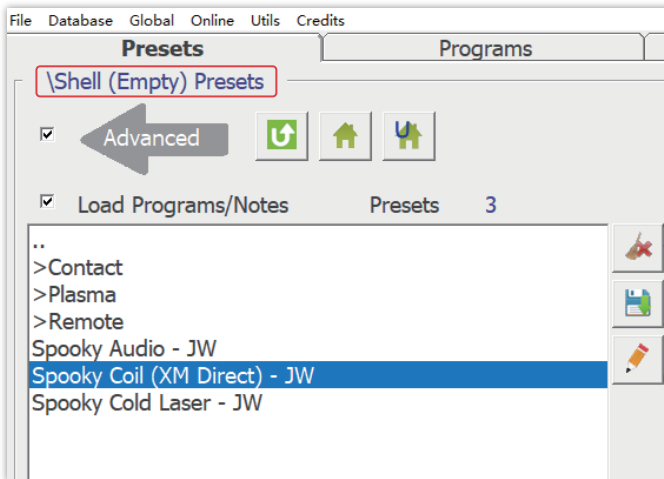
PEMF Coil

Step 1

First, connect Spooky2 Boost to the generator, and then connect the PEMF coil to the High Power Port of Spooky2 Boost.

Step 2

Turn on Spooky2-XM generator and launch Spooky2 software. The preset for PEMF coil is called Spooky Coil (XM Direct) - JW



Step 3

Use the BN side to touch the skin. The coil can be used for entrainment.



Note:

Do not use a PEMF coil in the following situations:

During pregnancy

Non-MRI-Safe IUD

People or Animals with Organ Transplants

People or Animals with Pacemakers, Hearing Aids, Medical Pumps, or other Electrical Implants/Devices

Non-magnetic metal rods, screws, and plates are safe for PEMF use.

If an implant is safe for an MRI, it is safe to use PEMF coil.

TENS Internal Electrode

Step 1

First, connect a Spooky2 Boost to the generator, then connect the TENS cable to the Colloidal Silver port of Spooky2 Boost. Connect each black-and red pin of the TENS cable to the TENS Internal Electrode. The treatment area will be between the electrodes as shown in below picture.



Alternatively, you may connect one TENS cable wire to one of the Internal Electrode wires, and the other TENS cable wire to a regular TENS pad. The treatment area will be the straight line between the electrodes as shown in below picture. The distance between electrodes is much greater using this method, allowing the prostate gland and bladder area to be treated.



We recommend you initially use the safe, low-power Colloidal Silver port of Spooky2 Boost. If you want more power, you can use the 'High Power' port of Spooky2 Boost.

Step 2

Internal Electrode Insertion:

We recommend liberal use of gel or water. Insertion is easier, and the electrical connection is improved. Keep the gel away from the cables. Carefully and slowly insert the internal electrode into the anal canal or vagina.

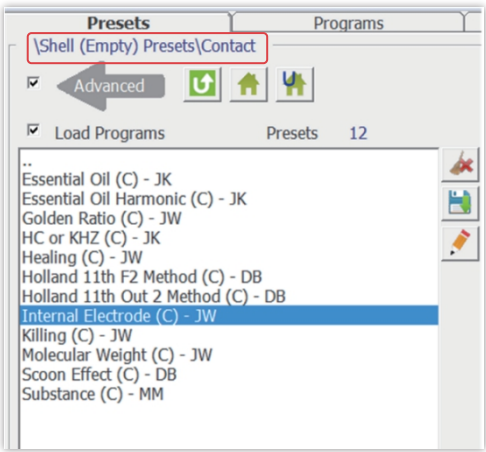
Place the (optional) secondary TENS pad on your chosen location.

Plug the TENS electrical cable firmly into the electrodes.

Choose a comfortable position. It is best not to move during treatment, as this may dislodge the electrode.

Step 3

Turn on Spooky2-XM generator and launch Spooky2 software. Load the Internal Electrode (C) - JW preset in Spooky2. This is a “Shell Preset” containing no frequencies. Select the program(s) best suited to your condition to run.



Note:

1. Do NOT immerse the electrode in water.
2. Do NOT use if you are pregnant.
3. Do NOT use if you are wearing, or have implanted, any electronic medical devices.
4. Stop immediately if you feel any discomfort.
5. Always clean the TENS internal electrode before and after each use. You can clean with an antibacterial wipe or with warm soapy water. Rinse and dry the electrode thoroughly. Be careful to keep the wires dry.

Spooky2 Central**Step 1****Making Connections:**

1. Connect your generator to Central. Out 1 goes to Input, and Out 2 connects to Modulation.
2. Connect your ultrasonic transmitter to the short adaptor plug, then insert this into the Ultrasonic socket.
3. Connect your Hand Cylinders or TENS pads to the short adaptor cable, then connect it to Contact.
4. Connect your PEMF coil to Coil.



5. Connect your plasma tube to the rear high voltage sockets.
6. Connect your mains electrical cable to the socket on the rear of the machine.



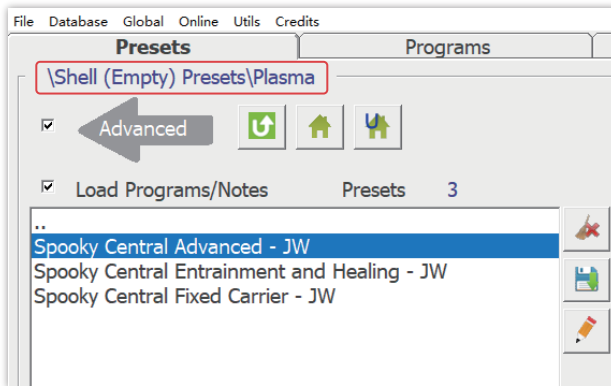
7. Use the USB filter cable to connect your PC to the Spooky2-XM generator that's connected to Spooky2 Central.

After connection, now switch on Spooky2 Central. The power light will illuminate orange.

Step 2

Software Settings

Launch Spooky2, select "Spooky Central Advanced - JW" from the Preset Menu, load the programs you wish to use, then run your Program. You can also use other Plasma presets for Spooky2 Central.



Note:

1. Never disconnect anything while Spooky2 Central is powered on – always switch it off first, then disconnect.
2. Accessories should be left unplugged if you do not plan to use during a session.
3. Spooky2 Central only accepts a 5volt / 100% offset square wave input. Any other voltage/amplitude or waveform may cause damage.
4. A Spectrum sweep can be used, but you must set it to use a square wave, with 5 as the value for Amplitude, and a 100% positive value entered in both Offset fields.
5. Input Duty Cycle (from Out 1) must be 50%. Modulation (Out 2) may have any Duty Cycle value.
6. To avoid the above programming errors, always use a Plasma shell setting or Plasma Preset for Spooky2 Central.
7. Please take caution if you have metal implants in your body.
8. Make sure the white high voltage wires, plasma tube and Spooky2 Central are as far from the generator and its power supply as possible. If either the high voltage cable of the tube or the tube itself is close to the power supply (or power supply wires) of the generator, the generator may easily lock up.
9. The cable from the 5v power adapter acts as an aerial, picking up the signals from Spooky2 Central. Please ensure the adapter is plugged into a different mains socket outlet.
10. Use a generator with P/N number starting from 2417.

11. Use the special USB and BNC filter cables provided with your Spooky2 Central. If you do not have the filter cables, they can be purchased from www.spooky2-mall.com.

12. A lot of powered USB hubs have very bad power supplies. And it can cause problems of using Spooky2 Central.



Spooky2 Pulse

Step 1

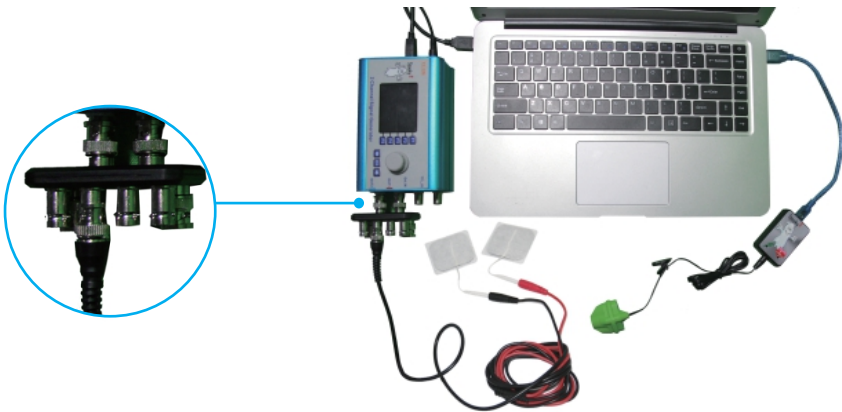
Scanning measures your heart rate's reaction to frequencies. Please follow these suggestions:

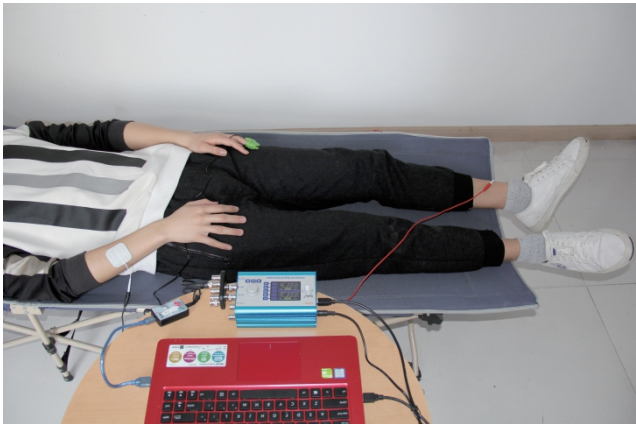
1. Lie down flat on a comfortable bed.
2. Ensure that you're well hydrated.

3. Remain completely relaxed throughout the scan. Avoid movement. You can go to sleep or you can use peaceful, relaxing music instead.
4. You may use Remote or Contact Modes to input the frequencies. For Contact Mode, TENS pads are best, one on the back of the right hand, the other just below the outside ankle of your left foot. For Remote Mode, use a Remote and a fresh DNA specimen.
5. Wear Ear clip on your left ear and wear finger clip on the middle finger of the left hand to get stronger senses.
6. Because digestion uses very large amounts of energy, it's best to start a scan two hours after your last meal.
7. Turn off your cell phone and remove it from the room.
8. Make arrangements not to be disturbed.
9. Pause or stop all other generator(s) from running during a scan.

Step 2

To start, connect Spooky2 Pulse via USB to the PC. Now launch Spooky2 software.





First, ensure that the Enable System Sounds option is ticked in the System tab. That way, Spooky2 will alert you via audio if something needs your attention.

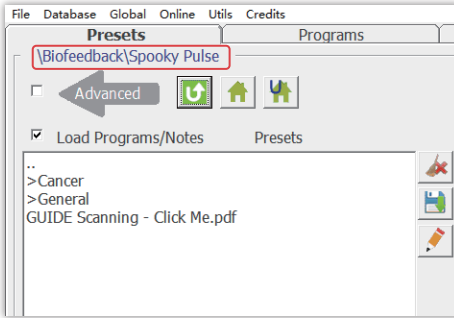
☒ **Enable system sounds**

General Settings

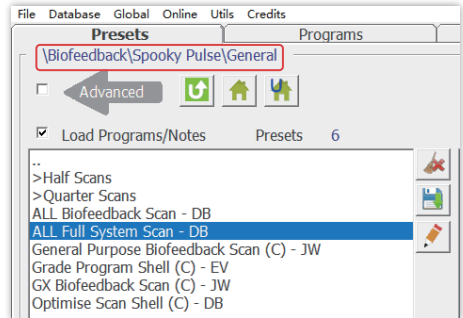
- ☐ Display Port Number
- ☐ High CPU Priority (Normal)
- ☐ Write program log
- ☒ Enable system sounds
- ☒ Show Internet Tab

Step 3

Scanning
Dr. Rife and Dr. Clark found that most pathogenic organisms resonate at a frequency between 76,000Hz and 880,000Hz. This is the range – or bandwidth – scanned by the ALL Full System Scan – DB preset. To load this, go to Presets and select Biofeedback:

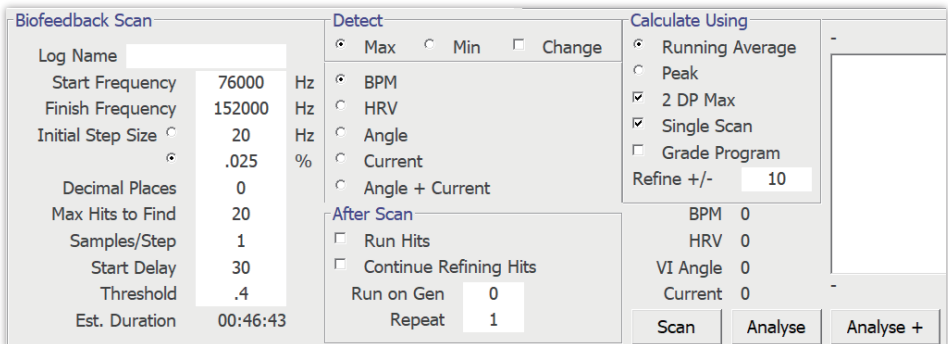


Now select >Spooky Pulse >General to see the result shown on the right.



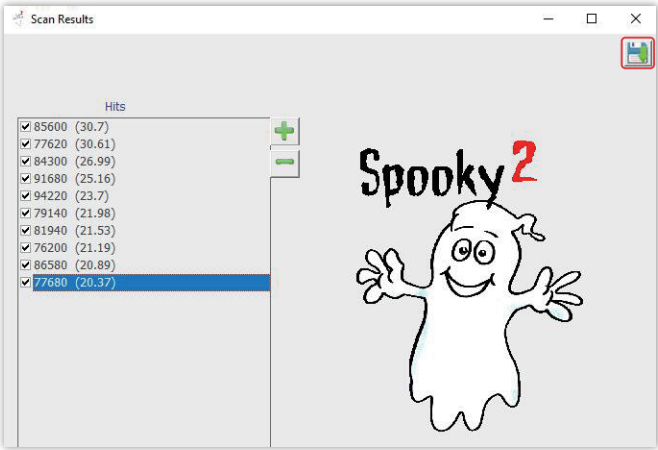
Select the highlighted preset .

Now go to Control, tick Allow Generator Overwrites, then click the scan generator. The Frequency Column should now be empty, and you should see these settings:

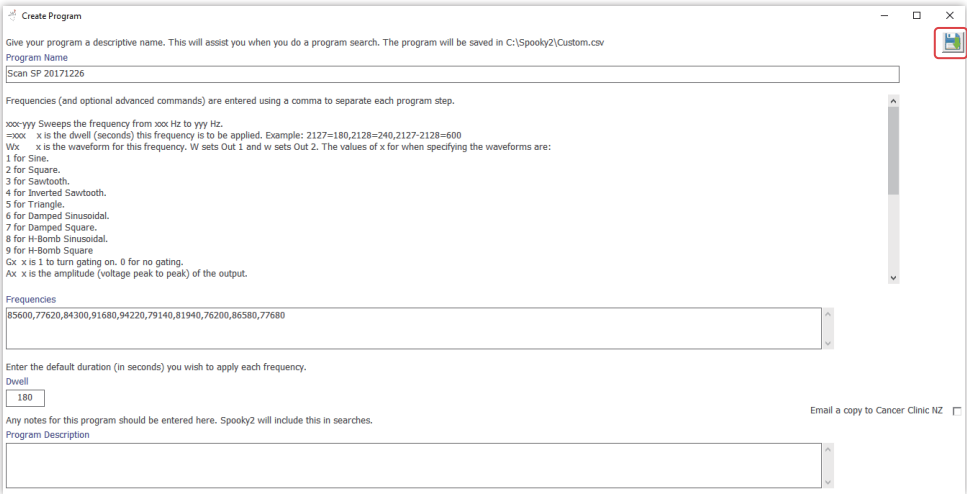


Click Scan Button to start biofeedback scan.

When your scan completes, you will see the results presented in a new window. You must save these by clicking the Save and Exit button.



This will take you to the Create Program window. Name your scan results set appropriately, then save it.



Spooky2 will automatically refresh the database loaded into memory. Your new program can now be searched in the Programs tab.

Note that this all-pathogen scan doesn't just find organisms – it also kills them. So remember that every scan you do is also a powerful treatment in itself.

For this reason, we recommend that scans be done in Contact Mode using TENS pads. However, it's also possible to use Remote Mode if necessary, but remember that a single remote sweep will not be as powerful a treatment as one done in Contact Mode.

You cannot use plasma to input a scan sweep because the plasma energy will freeze Spooky2 Pulse. However, you can use plasma to run your scan results, using the correct shell preset (Spooky Central Advanced - JW).

Note:

1. If your scan is interrupted in some way, you will have to start it again. Scans cannot be paused once they've started. If All Full System scan takes too long for you, you can choose to run Quarter Scan instead.
2. If the sensor has been dislodged and fallen off, you need to repeat the scan from the beginning.
3. You can also use GeneratorX to do a fast accurate biofeedback scan. Please refer to Page 47.

Colloidal Silver

Follow these simple steps to create true colloidal silver with a high silver content. The silver particle size will be very small. This increases effectiveness.

Step 1: Preparation

Spooky2-XM Generator x1 (including power adapter, USB cable)
BNC / Alligator cable x1
Spooky2 Boost x1
Spooky2 Silver Rod x2
Glass or Ceramic Container x1
Distilled Water Only
Magnetic Stirrer x1.



Step 2: Washing

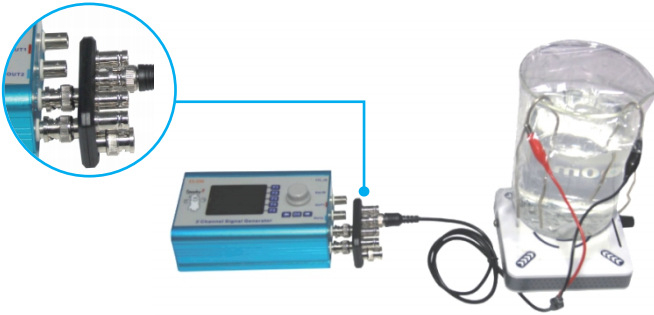
Thoroughly clean the Spooky2 silver rods and container. Rinse with distilled water and dry with a napkin.

Step 3: Connection

1. Fill a glass or ceramic container with distilled water. Do not use tap or filtered water. These will almost certainly contain unwanted impurities and chemicals.

2. Place two clean and shiny silver rods in the water. They must be more than one inch apart.

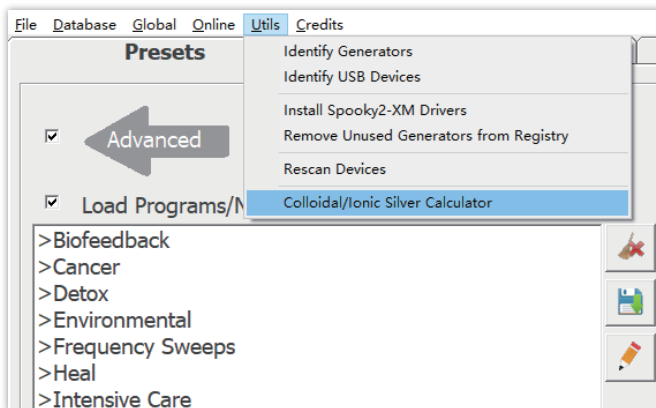
3. Making Connection. Connect Spooky2 Boost to the generator, then connect the BNC / Alligator cable to the Colloidal Silver port of Spooky2 Boost. Use alligators to clamp the silver rods.



It's a good idea to cover your container with a lid or a plastic food wrap.

Step 4: Settings

Turn on Spooky2-XM generator. Launch Spooky2 and use the calculator to estimate the Dwell you need to enter for the Colloidal Silver Generation program. Click Utils, Colloidal/Ionic Silver Calculator.



Colloidal / Ionic Silver Calculator

Spooky²

Colloidal/Ionic Silver Calculator

Colloidal/Ionic Silver is easy to make. Making truly great nano-particle silver takes more effort. Spooky can help. Enter values in the boxes to find the optimum setting.

By Calculation

Volume (ml)

500

PPM

20

Current (mA)

.2

Duration (mins)

750

Duration (hours)

12.5

Duration (days)

.5

By Measurement

Initial TDS

0

Final TDS

10

PPM

20

Enter your numbers in the top two to find the Dwell Multiplier you need to enter in the Program Options pane.

The total time needed to make your CS will be shown beside Duration (mins), which needs to be remembered. For example, I enter 500ml and 20PPM. The duration is 750 mins.

If you don't have a multimeter to measure the current, simply make the supposition that your system will consume 0.2 mA.

Go to Preset tab, load the Colloidal Silver Generation - JW Preset. Enter the estimated dwell into the Dwell Multiplier field and go to Control tab to start the preset.

Presets

Programs

Miscellaneous

☒ Advanced

☒ Load Programs/Notes

Presets

3

>Coil

>Contact

>Plasma

>Remote

Acne (Spooky Cold Laser) - JW

Colloidal Silver Generation - JW

Signal Test (R) - DB

Options

Repeat Each Frequency	1	<input type="checkbox"/> Remove Duplicate Frequencies
Repeat Each Program	1	<input type="checkbox"/> Apply Tissue Factor to MW and BP Programs
Repeat Sequence	1	
Repeat Chain	1	
Dwell Multiplier	750	
Frequency Multiplier	1	
Do NOT sort frequencies		

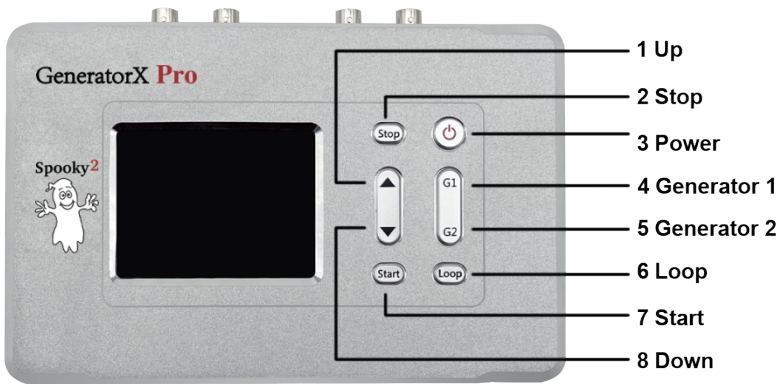
The waveform has been designed to produce very small silver particles of varying size. Do not rush the manufacturing process. Slower is better.



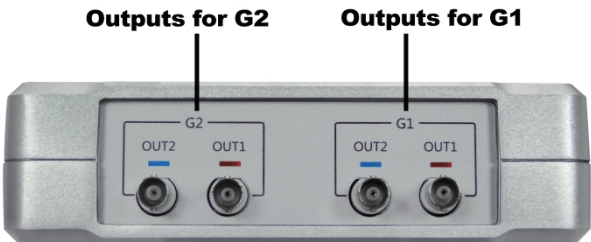
GeneratorX Pro

GeneratorX Pro (GX Pro) is a new entry in the Rife community. It is the world's most powerful Rife generator, brimming with features. Each GX Pro contains 2 function generators, each with 2 outputs and full biofeedback function. GX Pro can produce 40 MHz with any waveform, and can also load up to 30 programs from Spooky2 to run standalone without a computer. How amazing is that!

User Controls



Outputs



Part 1 Using GX Pro With Your Computer

Making Connections

Connect the 12V power adaptor into GX Pro.
Connect the USB cable to GX Pro and your computer.



Connect your signal-transmitting device directly to GX Pro, or through Spooky2 Boost.

GX Pro contains 2 function generators. Both fully independent to the other. So you can run two transmitting devices simultaneously.

In this example, G1 connects to a pair of Spooky2 TENS pads and G2 connects to Spooky2 Remote.



Short press the Power button to turn on GX Pro.

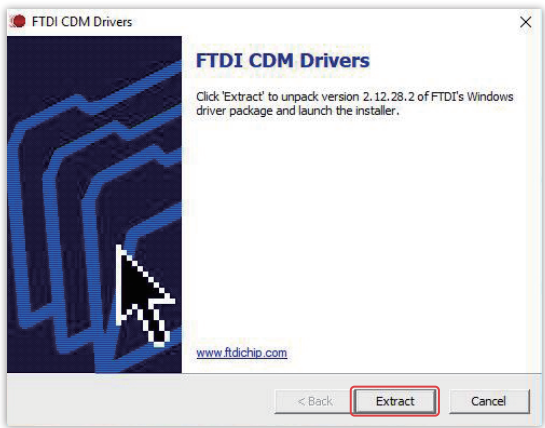
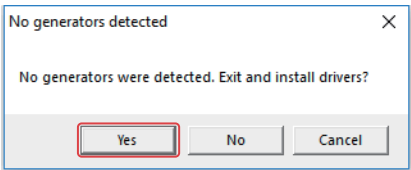


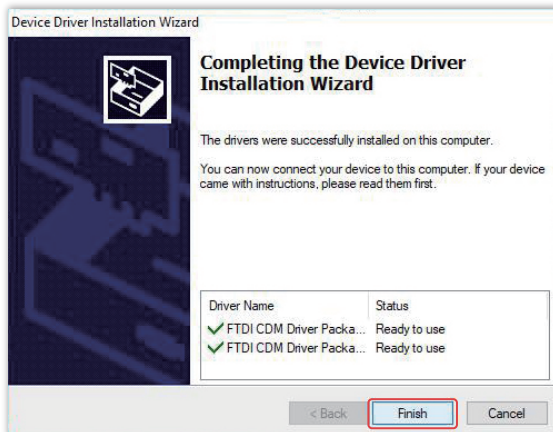
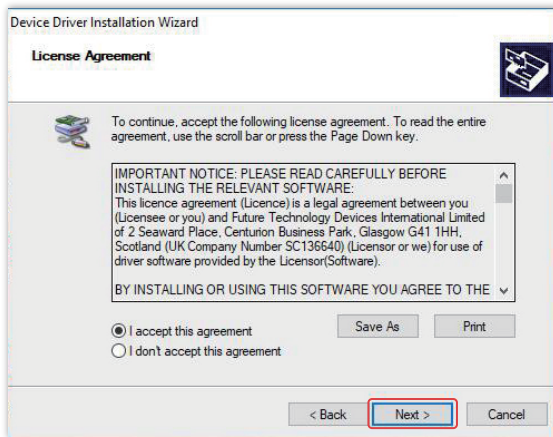
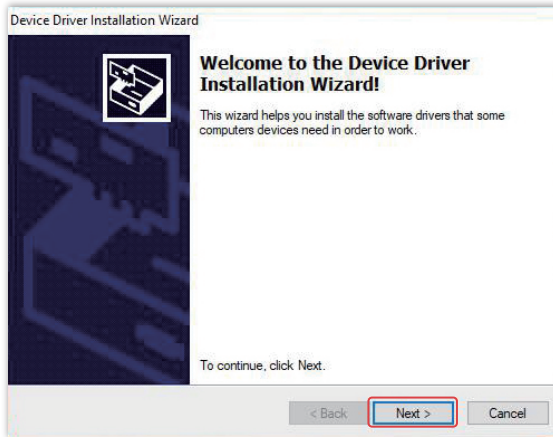
Tip

Whichever accessory you can wire to the XM, you can wire to the GX Pro, like Contact, Remote, Plasma, Cold Laser, PEMF, etc. And the connection of all the accessories is the same.

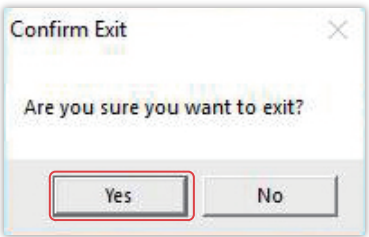
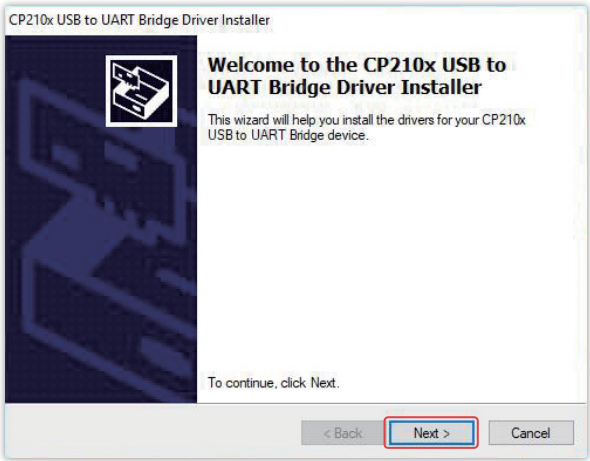
Software Operation

1. Launch the Spooky2 software. If this is the first time you have connect ed GX Pro, you will be prompted to install drivers:





You can skip the XM driver installation:

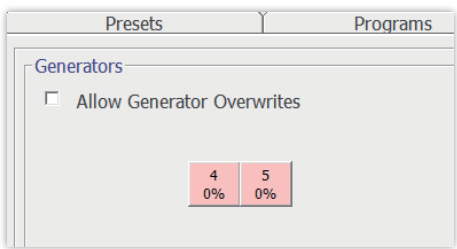


After Confirming Exit, restart Spooky2 software. All your generators will now be recognized.

GX Pro is 2 generators in one, so each GX Pro uses 2 ports. It is easy to identify the port numbers used by each generator. The port number is displayed on the screen. In this example, Generator 1 is using port 4 and Generator 2 is using port 5.

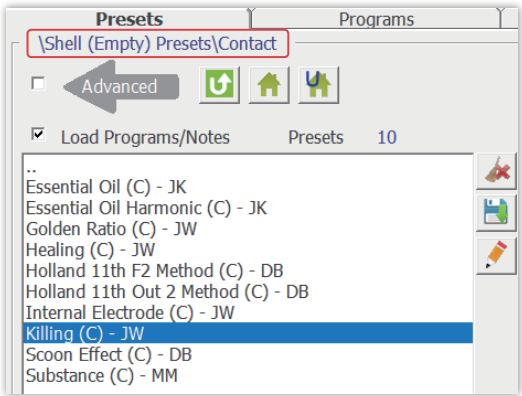


The software will show the port numbers in the Control tab:



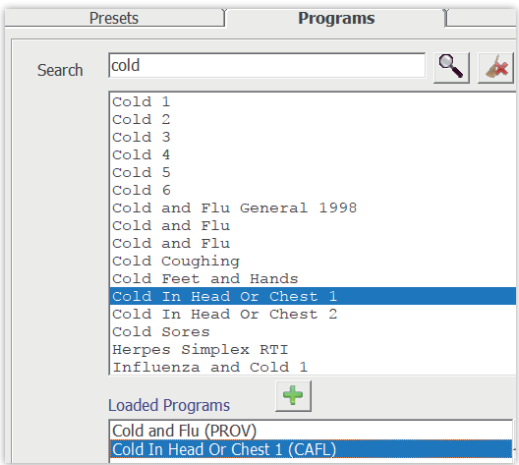
Now you can choose presets for your generators. In our example, Generator 1 is using port 4 and connects to a pair of Spooky2 TENS pads. Generator 2 is using port 5 and connects to Spooky2 Remote. So we choose a contact preset for port 4 (Generator 1) and a remote preset for port 5 (Generator 2).

For example, to treat a cold, you can use Generator 1 to run cold programs and Generator 2 to run detox programs. To do this, first go to Presets tab, select >Shell (Empty) Presets, and then the >Contact sub-collection. Next, select Killing (C) - JW.

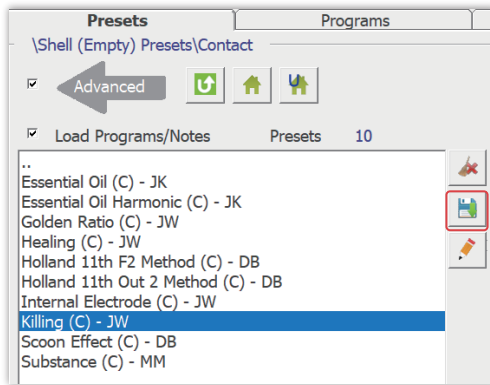


Now you can search for and load the programs you wish to run. Select the Programs tab and type "cold" into the Search field. You will get about 42 results. Double click Cold and Flu (PROV), followed by Cold In Head Or Chest 1 (CAFL).

You will see that both programs are now present in the Loaded Programs column below.



Now it's time to save your work, so return to Presets and click the Save button.



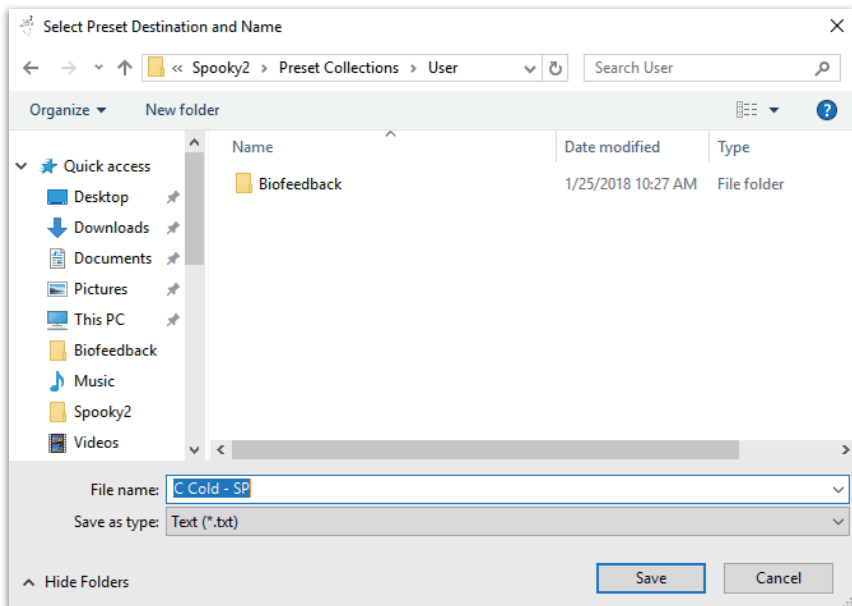
Spooky2 takes you to the User folder - which is where your personal presets are stored.

Since this is your first contact preset, the folder will be empty.

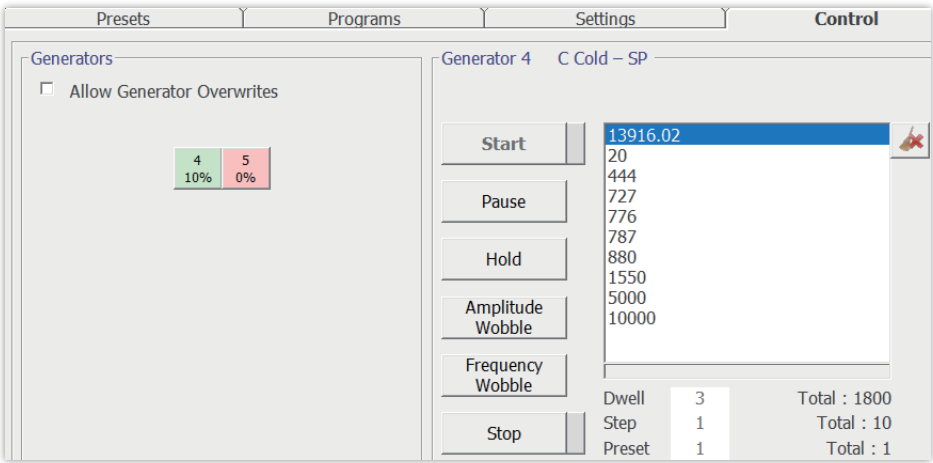
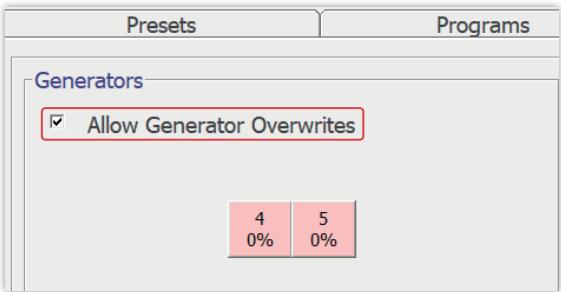
In the File Name field, type:

Cold (C)-SP

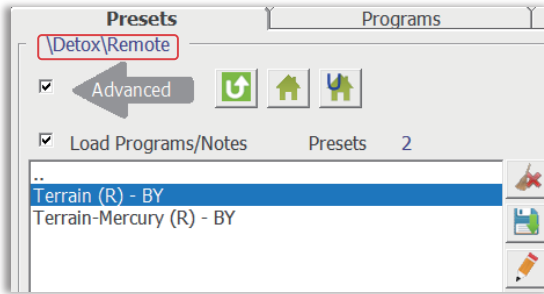
The "C" is to remind you that this is a Contact Mode preset. The SP is the User's initials. Change this to whatever you want, and select Save.



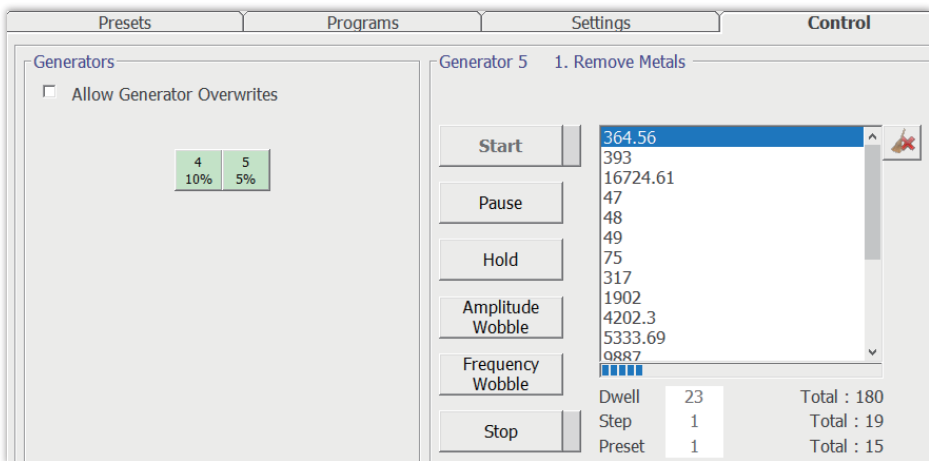
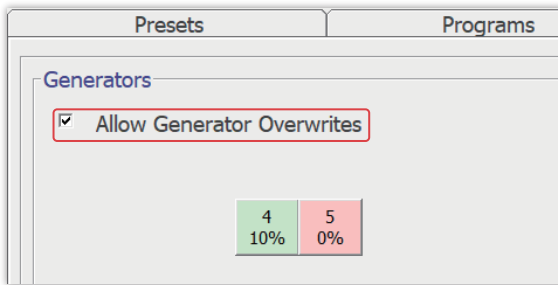
Now you can run the preset. Go to the Control tab. Tick the Allow Generator Overwrites checkbox, then select the generator button Port 4. You can now click Start to start the preset.



For Generator 2 (Port 5), you can choose a detox preset. In the Presets tab, select >Detox, and then the >Remote sub-collection. Next, select Terrain (R) - BY. If you have mercury amalgam fillings, please use Terrain-Mercury (R) - BY.



Go to Control Tab, tick Allow Generator Overwrites, open Generator 2 (Port 5). After the frequencies are loaded, you can click Start button to start the treatment.



Now two generators are running.

Biofeedback Scan

GX Pro changes the rules for biofeedback entirely. A biofeedback scan which takes an hour with Spooky2 Pulse now takes just over 6 minutes. It takes even less time if you do not need to measure both current and phase angle. No more sitting (or lying) down, waiting for a biofeedback scan is complete. GX Pro uses state-of-the-art components and ingenious circuit design to accurately monitor the current and phase angle of signals all the way up to 40 MHz. So you can really see what is happening in your body. There are two ways to do GX Pro biofeedback scans: GX Pro TENS Scan and GX pro Sample Digitizer Scan.

GX Pro TENS Scan

Step 1

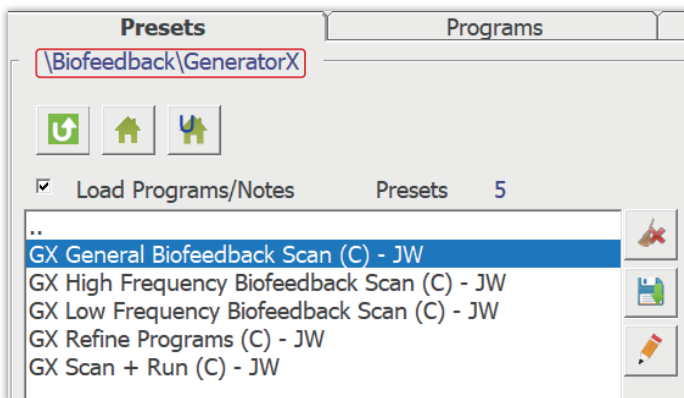
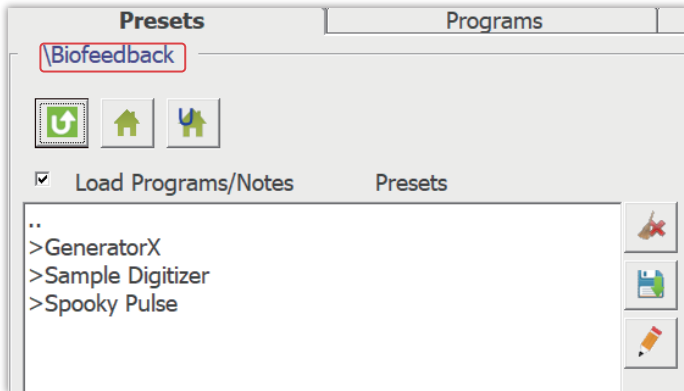
Connect your Spooky2 contact mode accessory to the Out 1 port of G1 or G2. Then short press the Power button to turn on GX Pro.



Step 2

Launch the Spooky2 software.

Go to the Presets tab, select >Biofeedback, GeneratorX Pro, and then select the GX Pro Biofeedback Scan (C) - JW preset:



Now go to the Control tab, tick Allow Generator Overwrites, then click the red generator control button. The Frequency Column should be empty, and you should see these settings:

Biofeedback Scan

Log Name

Start Frequency41000 Hz

Finish Frequency18000000 Hz

Initial Step Size100 Hz

.125 %

Decimal Places0

Max Hits to Find10

Samples/Step3

Start Delay300

Threshold.2

Est. Duration00:12:14

Detect

☒ Max☐ Min☐ Change

☐ BPM☐ HRV☐ Angle☐ Current☐ Angle + Current

After Scan

☐ Run Hits☐ Continue Refining Hits

Run on Gen0

Repeat1

Calculate Using

☐ Running Average☐ Peak☒ 2 DP Max☒ Single Scan☐ Grade Program

Refine +/-10

BPM0

HRV0

VI Angle0

Current0

Scan

Analyse

Analyse +

Enter the person's name and/or other details in the Log Name field. Place the TENS pads across the area you would like to scan. Then click the Scan button to start the biofeedback scan.

When your scan completes, you will see the results presented in a new window. You can directly do a reverse lookup by clicking Go. This will find matches of the resultant frequencies in the Spooky2 database. Save the frequency results by clicking the Save button.

Scan Results C:\Spooky2\ScanData\BFB 20180129_1103_22.csv

Hits

☒ 1194731.12 (6.35952380952381)

☒ 11988887.07 (6.0980952380952)

☒ 98222.61 (6.07238095238094)

☒ 1437356.46 (5.95714285714286)

☒ 95798.98 (5.89380952380952)

☒ 1417740.24 (5.84428571428569)

☒ 1305538.7 (5.8395238095238)

☒ 149452 (5.75380952380948)

☒ 221235.98 (5.75190476190474)


☒ 1753180.4 (5.75)

Reverse Lookup

0.025 % Tolerance

Go

Spooky2



This will take you to the Create Program window. Name your scan results set appropriately, then select Save. We suggest including the person's name and date. You can edit the Notes if you wish for future reference.

Create Program

Give your program a descriptive name. This will assist you when you do a program search. The program will be saved in C:\Spooky2\Custom.csv

Program Name
BFB 2018/1/29 11:25:24

Frequencies (and optional advanced commands) are entered using a comma to separate each program step.

xxx-yyy Sweeps the frequency from xxx Hz to yyy Hz.
=xxx x is the dwell (seconds) this frequency is to be applied. Example: 2127=180,2128=240,2127-2128=600
Wx x is the waveform for this frequency. W sets Out 1 and w sets Out 2. The values of x for when specifying the waveforms are:
1 for Sine.
2 for Square.
3 for Sawtooth.
4 for Inverted Sawtooth.
5 for Triangle.
6 for Damped Sinusoidal.
7 for Damped Square.
8 for H-Bomb Sinusoidal.
9 for H-Bomb Square
Gx x is 1 to turn gating on, 0 for no gating.
Ax x is the amplitude (voltage peak to peak) of the output.

Frequencies
1194731.12,1198887.07,98222.61,1437356.46,95798.98,1417740.24,1305538.7,149452,221235.98,1753180.4

Enter the default duration (in seconds) you wish to apply each frequency.
Dwell
180

Any notes for this program should be entered here. Spooky2 will include this in searches.
Program Description
Biofeedback Scan completed 2018/1/29 11:25:24

Email a copy to Cancer Clinic NZ ☐

Spooky2 will automatically refresh the database after adding a new program. Your new program can now be searched in the Programs tab.

Biofeedback Scan

Log Name

Start Frequency 41000 Hz
Finish Frequency 18000000 Hz
Initial Step Size 100 Hz
Decimal Places 0
Max Hits to Find 10
Samples/Step 3
Start Delay 300
Threshold .2
Est. Duration 00:12:14

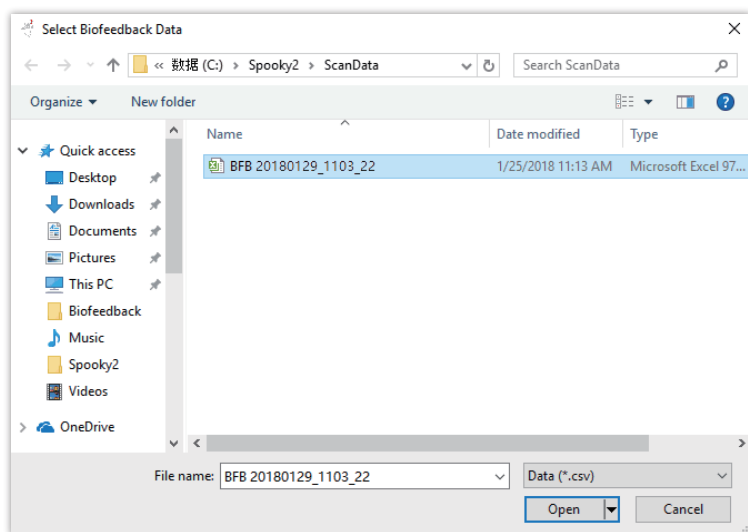
Detect
☒ Max ☐ Min ☐ Change
☐ BPM
☐ HRV
☒ Angle
☐ Current
☐ Angle + Current

After Scan
☐ Run Hits
☐ Continue Refining Hits
Run on Gen 0
Repeat 1

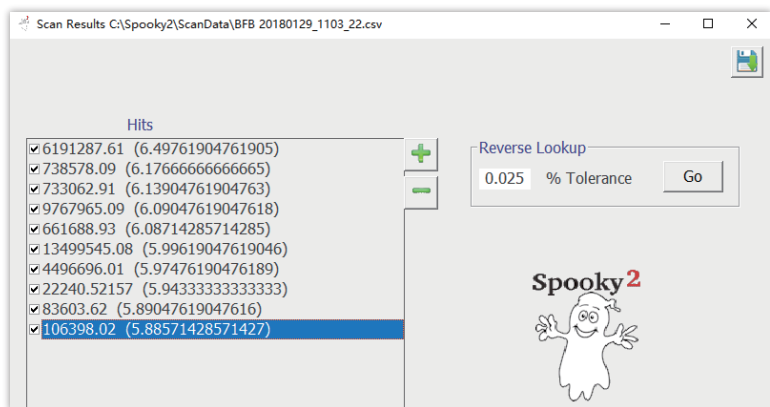
Calculate Using
☒ Running Average
☐ Peak
☒ 2 DP Max
☒ Single Scan
☐ Grade Program
Refine +/- 10
BPM 0
HRV 0
VI Angle 0
Current 0

Scan Analyse Analyse +

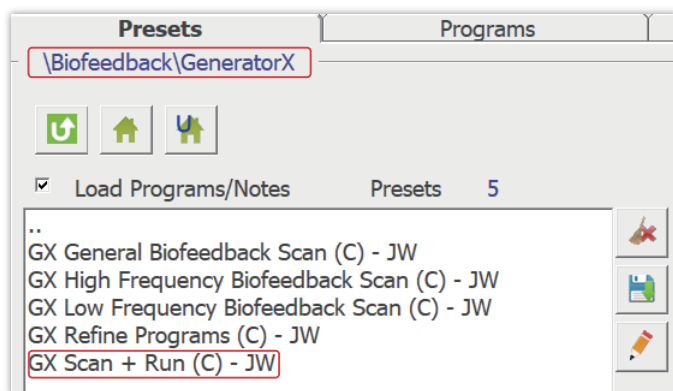
You can also click Analyse to open data from a previous scan. In this way you can also choose different settings for the analysis, such as choosing Angle instead of Current. Click Analyse + will analyse the data combining Current and Angle. BPM and HRV are combined for Spooky2 Pulse.



When the file opens, Spooky2 will instantly perform another analysis and present the results ready for another Reverse Lookup or for saving. The numbers in the file names are the scan date and time.



GX Pro can also do scans and treatment automatically using the GX Scan + Run preset. The preset begins with a 20-minute biofeedback scan. The hits found are then run on the same generator. When the program completes, another biofeedback scan commences. This cycle repeats until the preset is stopped OR no hits are detected. It can be run overnight using TENS pads. Simply load the preset and click Scan from the Control tab to start this preset.



Tips

1. It is better to have the electrodes as close as possible across the problem area, so more of the pathogen cells are passed by the signal.
2. For a general scan, place the pads on the left and right of the torso, midway between the hips and the shoulders. The signal will go through the gut, which is a major organ, reflecting the state of your body. Many pathogens reside there.
3. Never place electrodes above the neck and keep them away from the heart.
4. Hand cylinders can be used instead of TENS pads, but the grip has to be kept constant for accurate results.
5. The biofeedback scan function can only be used when GX Pro is controlled by the Spooky2 software. It cannot be performed stand-alone.
6. Spooky2 can only perform one biofeedback at a time.

GX Pro Sample Digitizer Scan

Step 1

Place the liquid biological sample on one slide. Ensure the sample is placed in the black capital E.



Place the other slide on top. The two capital Es should be facing each other.

Clip the slides into the Digitizer.

Connect your Spooky2 Sample Digitizer to the Out 1 port of G1 or G2.

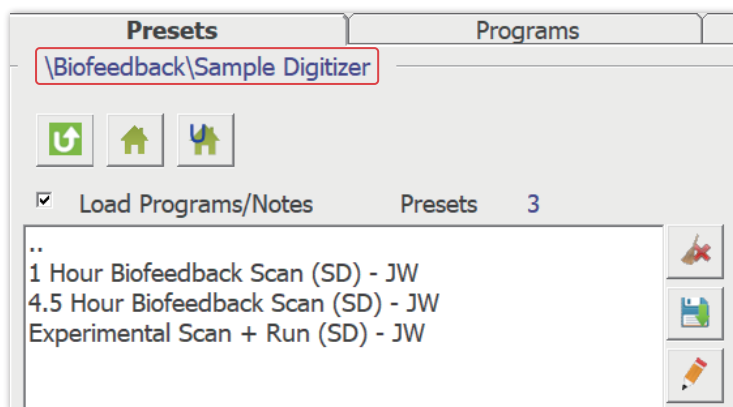


Then short press the Power button to turn on GX Pro.

Step 2

Launch the Spooky2 software.

Go to the Presets tab, select >Biofeedback, Sample Digitizer. You can see there are three presets. The first two presets are for Sample Digitizer biofeedback scan. The third preset combines scan and treatment, which is an experimental function. For effective treatments, we recommend using Plasma, Contact and Remote mode to run scan results.



You can choose 1 Hour Biofeedback Scan (SD) - JW or 4.5 Hour Biofeedback Scan (SD) - JW preset to perform a simple scan. The longer scan duration time improves the accuracy of results.

You can load the preset and click Scan from the Control tab to start a Sample Digitizer scan. After you save your scan results, you can run the results using Plasma, Contact or remote mode.

The Experimental Scan + Run (SD) - JW preset allows you do scans and treatment automatically. The preset is designed to run until stopped. It begins with a 27-minute biofeedback scan. The hits found are then run on the same generator. The Sample Digitizer doubles as a primitive remote during this phase.

When the program completes, another biofeedback scan commences. This cycle repeats until the preset is stopped OR no hits are detected.

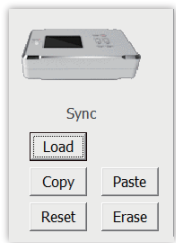
Simply load the preset and click Scan from the Control tab to start this preset.

Tips

1. Spooky2 Sample Digitizer can only be used with GeneratorX Pro.
2. Treatments using Spooky2 Sample Digitizer is an experimental function.
3. We suggest using Sample Digitizer Replacement Slides for optimum scan results.
4. You can use alcohol to clean Sample Digitizer Replacement Slides. Dry thoroughly before use.
5. Do not use the same Sample Digitizer Replacement Slides for different people.
6. You can use urine, saliva, blood, nail powder and biological samples (ie, Cancer cells) as the samples. Do not allow the tissue sample to dry. Replace the sample every day.

GX Pro Software Features

When GX Pro is detected, the Spooky2 software shows more controls. Here we will explain the function of these controls.

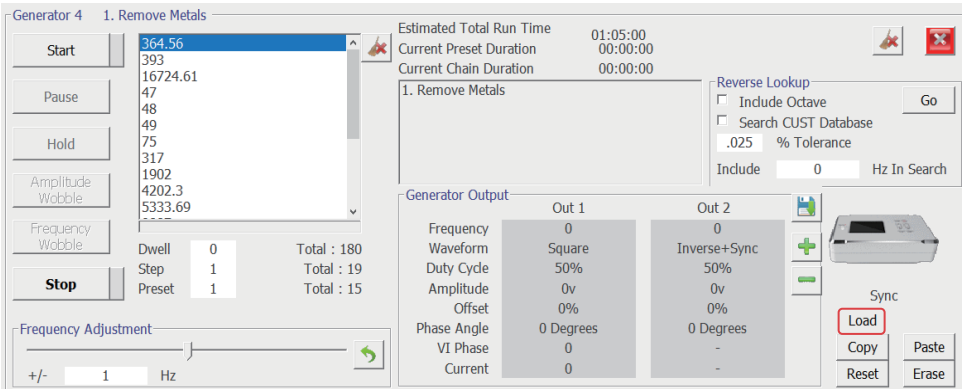


Load

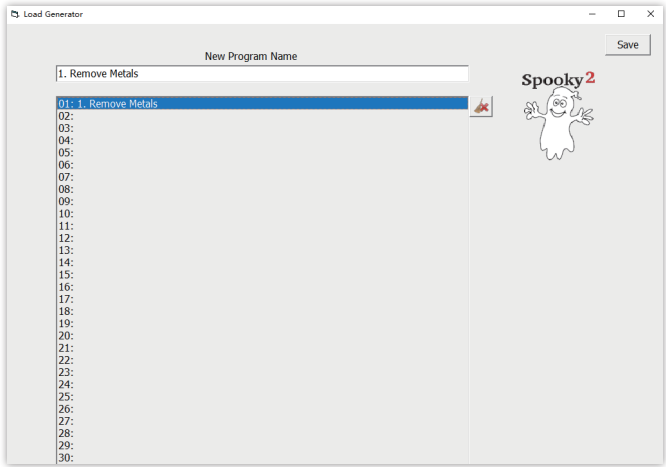
Store programs and basic settings in the generator so it can run stand alone.

Loading programs into GX Pro

- 1. Choose a Preset in the Presets tab.
- 2. Go to the Control tab. Tick Allow Generator Overwrites and open a generator.
- 3. Click the Load button.



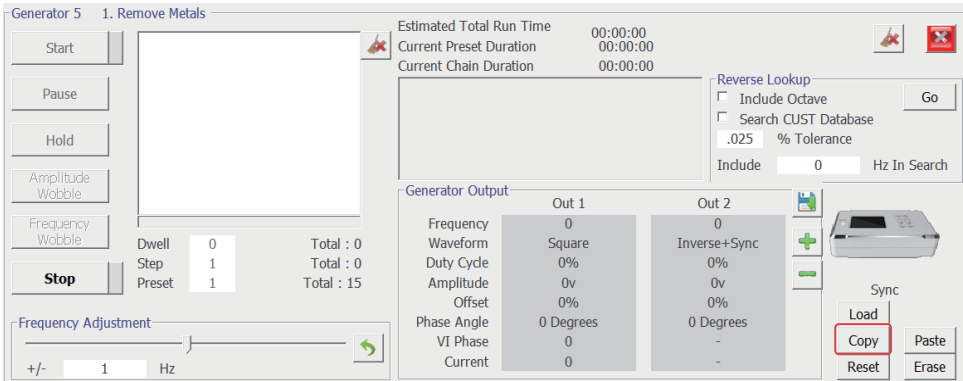
- 4. Double click to select a memory location to save the preset and click Save. You can overwrite an existing memory location if you wish. Load up to 30 programs into each generator.



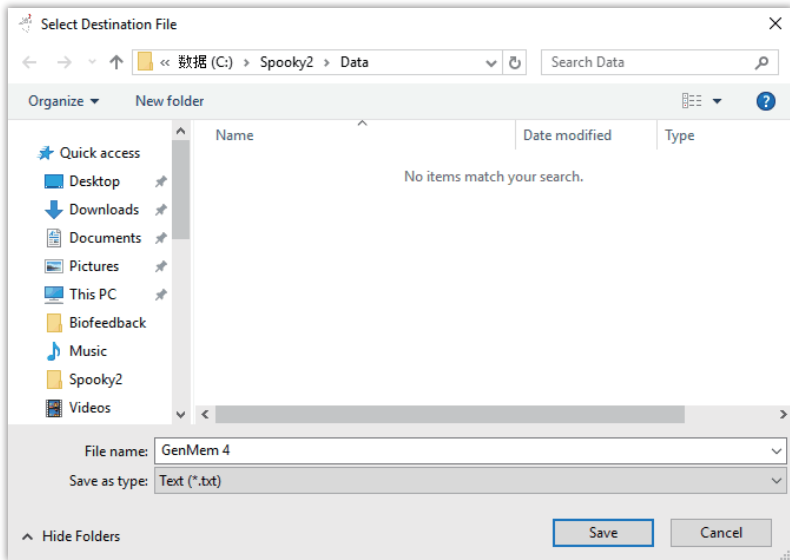
5. Turn off GX Pro and disconnect from your computer. You now have a stand-alone Rife machine!

Loading programs into GX Pro

- 1. Choose a Preset in the Presets tab.
- 2. Go to the Control tab. Tick Allow Generator Overwrites and open a generator.
- 3. Click the Load button.



2. Name the copied file and save it. The file will be saved in \Spooky2\Data.



Paste

Paste a memory file to GX Pro. The entire memory contents will be transferred to GX Pro memory.

Please note that Copy and Paste functions are very convenient if you want to standardize the stand-alone programs in your generators, or if you want to share program sets or generators with your friends.

Reset

Reset the generator to factory defaults. The generator will power off after resetting. You will need to Rescan Devices (top menu Utils) after resetting.

Erase

Clear all programs in the generator.

Part 2 Stand-alone - Running Spooky2 Programs

Hardware Connection

Connect the 12V power adaptor into GX Pro.
Connect the transmission device of your choice to the output of GX Pro.
Because each GX Pro contains 2 function generators, you can use two transmission devices on your GX Pro simultaneously.

This example shows 2 Spooky2 Remotes connected to GX Pro:



Press the Power button to turn on GX Pro.
You can choose programs for either G1 or G2. In this example we have selected the first generator G1.



Press the G1 button. The selected generator panel will turn white.



Use the arrow Up and Down buttons to choose the program to run, for example, Abdominal Pain.



Highlight a program, and press the Start button. This selects the program. GX Pro will return to the main screen.



Press Start button again. The program will start. The frequency will be shown in the display.



If you wish to run the program continuously, press the Loop button instead of the Start button. The Loop icon will appear on the top right of the screen.



If you press Start or Loop while a program is running, it will pause.



Pressing the same button again will continue the program.
Pressing Stop will stop the running program.





Press the G2 button to choose a program for G2. The procedure for choosing and running a program for G2 is the same as that of G1.

Generator Status



Running



Stopped



Paused



Looping



USB is connected



GX Pro detected by Spooky2

Specifications

General Description

GeneratorX Pro is a state-of-the-art arbitrary waveform generator, with two generators combined into a single unit. Display and memory storage tasks are controlled by an immensely powerful 266 MHz ARM (Advanced RISC Machine) processor. A second 266 MHz ARM processor handles the main functions. A third 16 MHz advanced STM8 core processor controls the analog measuring capabilities of GeneratorX Pro. The 3 processors work together for unparalleled performance.

GeneratorX Pro Specifications

Power Adapter: 12VDC 2A
 Configuration: 2 x Independent DDS generators
 Output Short Circuit Protection: Yes
 Offline (Stand-alone) Operation: Yes
 USB speed: 115200 bps
 Maximum Offline Program Count: 30
 Maximum frequencies per program: 200
 Microprocessors:
 2 x 128kB ARM CPU with Firmware upgrade.
 1 x 64 MHz advanced STM32 core CPU for data collection.
 Output waveform: 10 bits x 1024 bits
 High-performance Xilinx FPGA with High Sampling Rate: 300 MSPS.
 Display: 3.2" TFT True Color LCD
 Display Resolution: 320 x 240 bit
 Maximum Amplitude: 20vpp
 Amplitude Resolution: 0.01v
 Output Impedance: 50 Ω
 Frequency Range: 0 - 40 MHz for all waveforms
 Frequency Resolution: 0.00000001 Hz up to 40Mhz
 Modulation Method: AM (Out 2 modulates Out 1)
 Measurement Detection: Current and Phase Angle
 Measurement Method: High-side Detection
 Measurement Frequency Range: 100 Hz - 40 MHz
 Measurement Resolution: 16 bits
 Current detection resolution: 3.4uA
 Phase angle detection resolution: 0.0015 degrees

Spooky2 Scalar

Brief Overview

The key to healing is information - Scalar information. Our cells communicate using Scalar fields. When this communication is blocked, our health suffers. Spooky2 Scalar can restore our body's natural healing mechanisms.

Spooky2 Scalar is the first Scalar treatment device to provide three different methods of sending healing Scalar waves. You can choose which of these best suits your needs. You can read more in the “How to Apply Scalar Energy” section.

Spooky2 Scalar is comprised of two black cases. One is called a Transmitter, and the other, a Receiver. The Transmitter is turned on and tuned. Anyone between the lids of the two cases receives life-giving Scalar waves. Scalar treatments can be that simple.



Parcel Contents



Transmitter Box x 1



Receiver Box x 1



Link Cable x 1



Power Cable x 1



BNC Cable x 1

Detailed Overview

Transmitter Panel:



Receiver Panel:



Setting Up Spooky2 Scalar

Starting Scalar treatments is a breeze. There are 4 simple steps:

1. Place the Transmitter and Receiver either side of a chair or bed.
2. Connect the 12V Power Adapter to the Transmitter Power Port.
3. Plug the Link Cable into the Transmitter and Receiver Link Connectors.
4. Turn on and tune the Transmitter.



Tuning

Just like a radio, Spooky2 Scalar requires tuning. It is very simple to do.

Turn the Tuning Adjustment knob anticlockwise until the Tuning Light beside the output coil is at maximum brightness.



Important Note

The tuned frequency is usually between 5 MHz and 7 MHz.

How to Apply Scalar Energy

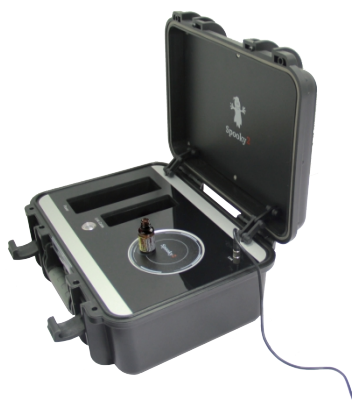
Spooky2 Scalar can apply Scalar energy in three different ways: Pure Scalar, Molecular Scalar, and Rife Scalar.

Pure Scalar

This is the easiest way of applying healing Scalar energy, because nothing special needs to be done. Tune Spooky2 Scalar, then sit or lie between the Transmitter and Receiver. Pure Scalar energy then flows between the Transmitter and Receiver.

Molecular Scalar

The Scalar signal can be enhanced by placing a substance on the input coil. The molecules within the sample will change the signal between the lids. You get the curative effect of the chemical. The substance can be essential oils or drugs. For instance, you can place peppermint oil on the input coil, and you will receive the benefits that peppermint oil provides.



Scientific studies have proven that information alone can cause destruction to pathogens. Poisoned cancer cells on the input coil will induce death of cancer cells inside your body. The information of the dying cells is being passed to your internal cancer cells, and they also die.

Rife Scalar

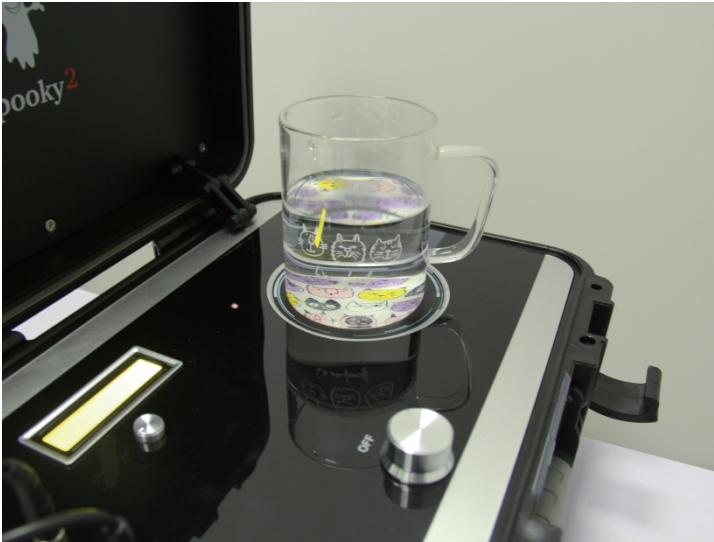
The third way to improve the Scalar waves is Rife Modulation. It combines the discoveries of Royal Rife with Nicola Tesla. Royal Rife found that pathogens respond to a particular frequency. Spooky2 Scalar can apply this frequency using healing Scalar waves. Only Spooky2 Scalar can modulate the original frequencies of Royal Rife. It turns Spooky2 Scalar into the world's most advanced Rife machine.

Connect a Spooky2 generator to the Generator port on the Transmitter box. Turn on the generator and tune your Spooky2 Scalar. Select the Spooky2 Scalar General (SS) - JW preset (square wave, 5v and 100% offset). Load the programs you wish to run, and start the generator. Sit between the Transmitter and Receiver while programs are running. Spooky2 Scalar accepts any frequency from the massive Spooky2 database.

If you are new to Spooky2 Rife Machine, you can read more information on spooky2.com and spooky2-mall.com.



You can put a glass of water on the output coil during Molecular or Rife Scalar treatments. This is the process called frequency imprinting. After you put the glass on the output coil, retune your Spooky2 Scalar before your Scalar treatment. When you finish the Scalar treatment, you can drink this water during the day to enhance the treatment effects.



The two modulation methods can be used simultaneously to further improve effectiveness of treatments. For example, to treat Cancer, you can place Frankincense, Peppermint, Lavender, Evening Primrose and Citrus essential oils on the input coil, and run cancer-killing programs on the connected Spooky2 generator.

For example, people with cancer may wish to place a chemotherapy drug on the input coil to induce cancer death in their body. Adding a cancer toxin to a sample of their urine or blood and placing that on the input coil will improve results further, as the information of the cancer cells dying will be transferred to the cancer cells in the body. They too will die.

Important Notes

1. Tune before each treatment. The tuning point may vary each day according to the temperature and humidity, as well as the layout of the machine.
 2. Please turn the Receiver Tuning Light off during Scalar treatments.
 3. The Transmitter and Receiver should have their lids facing each other.
 4. Keep the link cable between the Transmitter and Receiver away from metal. Please do not roll the cable if the cable is long.
 5. People who are pregnant or have a pacemaker should not use Spooky2 Scalar.
 6. Overnight treatments are perfectly safe. You do not get “Frequency Fatigue” from overexposure to Scalar fields. Your body takes what it needs, and disregards the rest.
 7. It's best not to share the Scalar field with anyone who has serious illness.
 8. Free Gift: BNC Cable
- We provide a BNC Cable in your parcel. You can use this BNC cable to connect with a Spooky2 Generator to experience Rife Scalar Treatments. It is not needed for Pure Scalar or Molecular Scalar treatment.

Specifications

Transmitter Size: 170mm (H) x 360 (W) x 290 (D)
Receiver Size: 170mm (H) x 360 (W) x 290 (D)
Weight: 11 kg
Power Adapter: 12 VDC 2A
Input Current Maximum: 0.6A
Frequency Range: 1.00 MHz – 8.00 MHz
Frequency Step Size: 50 kHz
Scalar Flow: 30mA
Free Gift: BNC Cable

Spooky2 Scalar Digitizer

Brief Overview

Biofeedback is a way of finding out what frequencies are best suited to your body. Spooky2 Scalar is the only Scalar device capable of performing biofeedback scan. Spooky2 Scalar Digitizer measures tiny changes in the Scalar field during a Scalar frequency scan.

Scalar biofeedback requires the use of two generators. GX Pro is two generators in one. G2 modulates the Scalar field, and G1 measures the response. Follow the instructions below to perform a Scalar biofeedback scan.

Hardware

1. Connect Scalar Digitizer to the link cable port on the Scalar Transmitter.



2. Connect the link cable and power cable to the Spooky2 Scalar transmitter.



3. Connect G1 Out 1 to the Spooky2 Scalar Digitizer BNC port.



4. Connect G2 Out 1 to the Spooky2 Scalar Transmitter BNC port .



5. Connect GX Pro to the computer USB port and short press the Power button to turn on GX Pro.



6. Turn on and tune your Spooky2 Scalar.

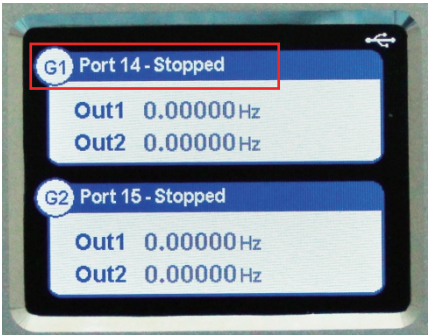
Tips

GX Pro should not be in the Scalar field, because the case and electronics in GX Pro are metal, and will distort the field. Please keep GX Pro 1m away from the Spooky2 Scalar Transmitter, and 1m from the Scalar field.

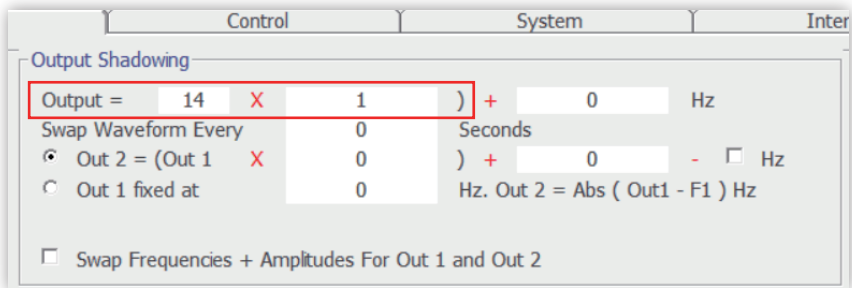
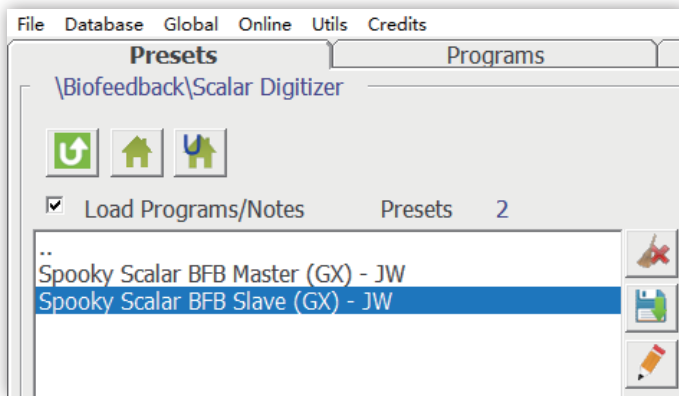


Software

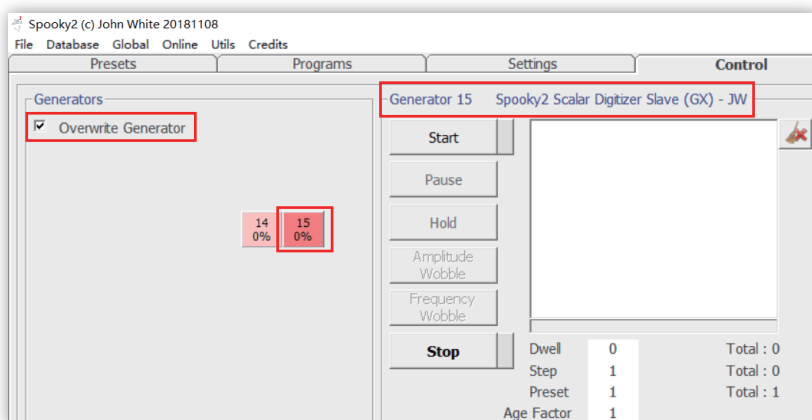
1. Launch the Spook2 software. Please take a note for the corre sponding port numbers for G1 and G2, which can be seen on the GX Pro display. In this example, G1 is Port 14 and G2 is Port 15.



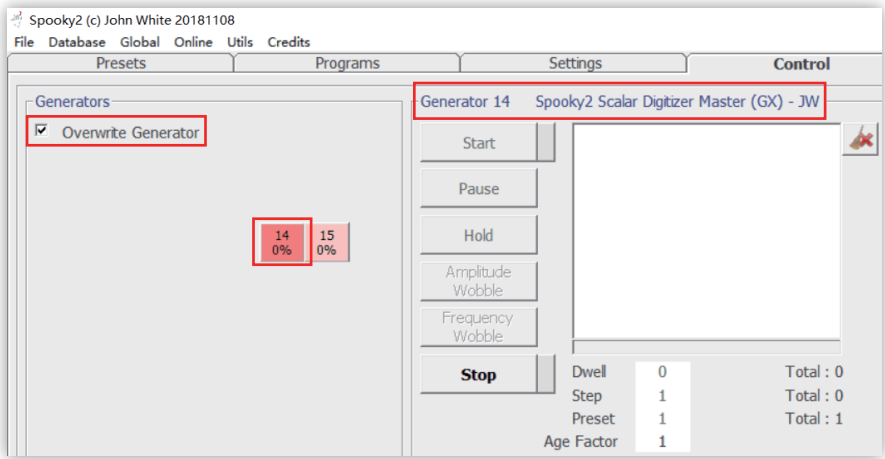
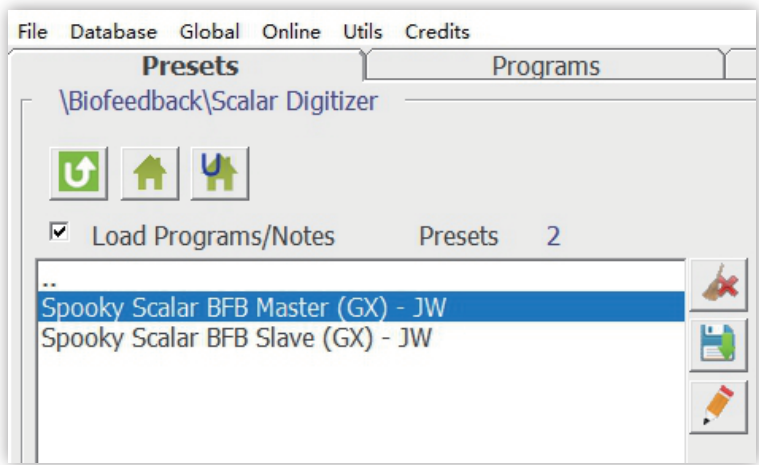
2. Select the Spooky2 Scalar Digitizer Slave (GX) - JW preset, then go to the Settings tab. In the Output Shadowing frame, set 'Output = [x]', x = the port number of G1. Here, x=14.



3. Go to the Control tab, tick Overwrite Generator and choose G2 (Port 15) to load the settings.



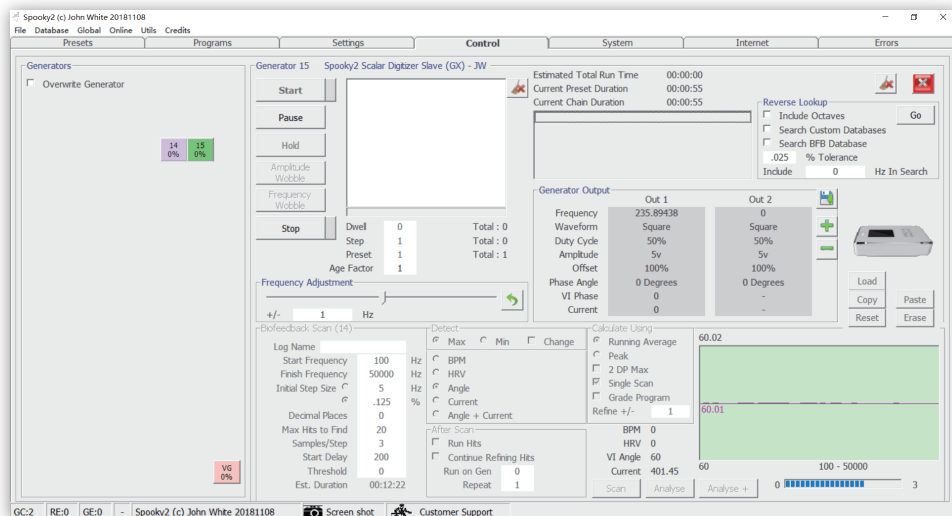
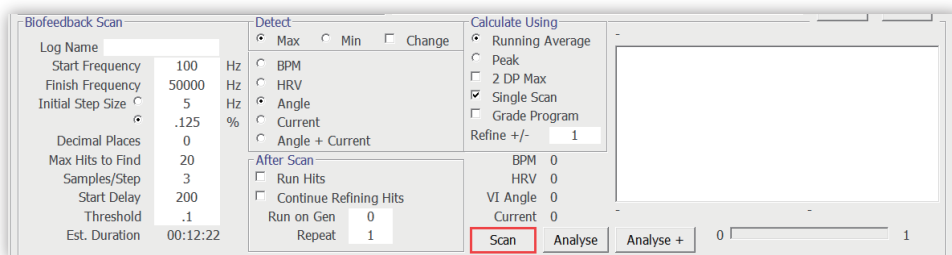
4. Then, go back to the Presets tab. Select the BFB Master preset, go to the Control tab, tick Overwrite Generator, and choose G1 (Port 14) to load the preset.



5. Lie between the two scalar units, and ask an assistant to click the Scan button to start the biofeedback scan.

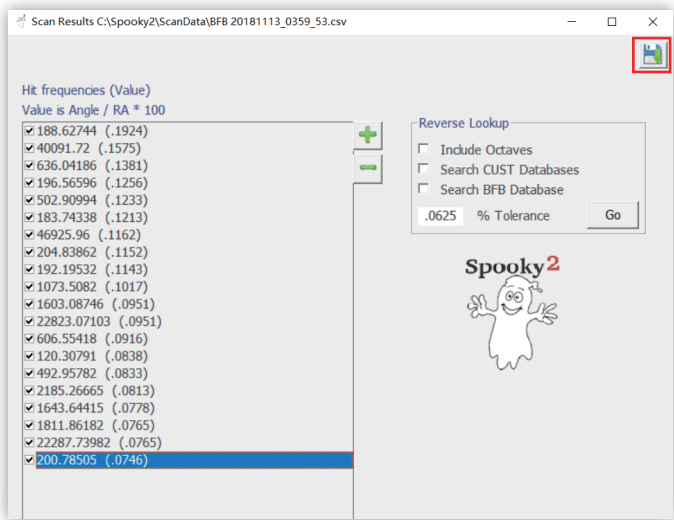
Note:

If you do not have anyone to help, set the Start Delay to 2000. This will give you time to start the biofeedback scan and position yourself correctly between the units.

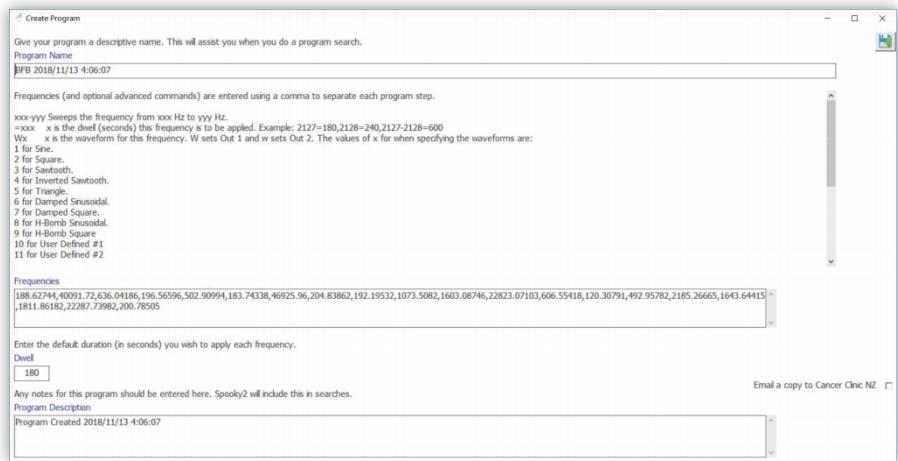


G2 will automatically start, causing Spooky2 Scalar to transmit the generator frequencies. G1 will start, but no frequencies will be produced. Instead, the amount of Scalar energy being absorbed for each frequency by the body will be recorded.

When your scan completes, you will see the results presented in a new window. Save the frequency results by clicking the Save button.

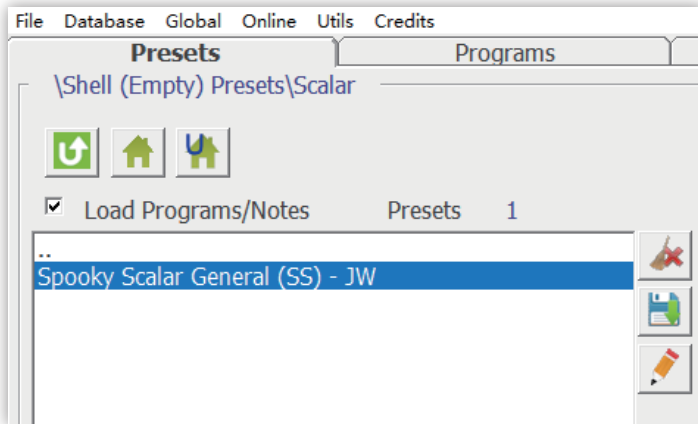


This will take you to the Create Program window. Name your scan results set appropriately, then select Save. We suggest including the person’s name and date. You can edit the Notes if you wish for future reference.



Spooky2 will automatically refresh the database after adding the new program. Your new program can now be searched in the Programs tab.

Use Spooky2 Scalar General (SS) - JW preset to run your scan results.



Tips

1. It is best to lie perfectly still, and only have one person in the Scalar field. This field extends outward, so ensure no living organism is nearby.
2. It is important to make a note which port numbers correspond to G1 and G2 before running a biofeedback.
3. Spooky2 Scalar BFB Master preset performs the recording. Spooky2 Scalar BFB Slave preset supplies the frequencies for Spooky2 Scalar modulation.
4. We suggest using G1 with Spooky2 Scalar BFB Master preset, and G2 with the corresponding slave preset.
5. You can do short scans once a day and longer scans once a week.
6. It is best to remove Spooky2 Sample Digitizer and retune Spooky2 Scalar before running the biofeedback results. Spooky2 Sample Digitizer slightly reduces the scalar field strength.

Tips

Treatment Choices

Before you use Spooky2 to tackle any problem, you have a number of very important things to consider first:

Which mode – plasma, contact, or remote?

Plasma: well-designed and implemented plasma is the quickest and most powerful. The very best available today comes from the Spooky2 Team – Spooky2 Central.

Contact: this comes next for speed and power.

Remote: scalar DNA treatment. The convenience of Remote Mode makes it a winner.

There are considerable benefits from mixing your modes, and our recommendation is to do one Plasma or Contact session on the main problem every day, then switch the generator over to Remote Mode. That way, you get the best of both worlds.

Protocols

Spooky2 software includes Terrain Protocol, Cancer Protocol, Morgellons and Lyme Protocol, etc. You can find them in the Presets tab.

Spooky2 Support Resources:

Spooky2.com

This is the main website. If you're new to Rife, this is where you can start to understand what it is, what it can do, and how it works. There are also six mirror sites in other languages.

Spooky2-Mall.com

The Spooky2 store is the world's only officially-authorized seller of Spooky2 equipment and accessories. We do not appoint profit-hungry national distributors or sales agents.

Spooky2 Members Forum

User support is delivered through the private Spooky2 Members Forum. Join through the Spooky2 website gateway page, but please read its red text carefully before proceeding.

Spooky2 Rife For Life Facebook Group

You'll also find friendly and helpful support here, with a large vibrant community.

Spooky2Support.com

We've hand-picked and compiled a repository of useful information from our users here, making it a one-stop source for solutions. A quick search will most likely find an instant answer. If not, simply complete and submit the support request form and our Support Team will get back to you as soon as possible.

Spooky2Videos.com

Video tutorials, guides, setup instructions, reviews, and user tips and tricks, with detailed PDF documents, and many blog and Q&A posts to help you learn quickly.

Spooky2 Blog

This is a huge repository of articles and answers to questions on all aspects of Spooky2 and Rife therapy. All links are clickable.

Spooky2 Weekly Digest Archive

An archive of all Spooky2 weekly newsletters containing answers, tips, and tricks.

Legal Notice & Disclaimer

The Spooky and / or Spooky2 software and frequency generation systems are not approved by the FDA as medical devices. They are intended for use as experimental electronic devices only. They are not intended for the diagnosis, prevention, cure, treatment, or mitigation of any disease or illness in human beings. Neither are they designed or intended to affect the function or structure of any human body system.

We make no medical claims whatsoever for the Spooky and / or Spooky2 frequency generation systems. If you have a problem with your health, please consult a licensed healthcare professional.

In the US, you can legally use frequency systems like Spooky and / or Spooky2 for testing, energy balancing, life extension, and relaxation. You can experiment using frequencies on bacterial cultures, laboratory animals, and yourself. You still have a legal right to self-medicate under the Ninth Amendment of the United States Constitution.

In Germany and South Africa, as well as some other nations, frequency devices are legally licensed as medical instruments.

Please note that we are not responsible whatsoever for the use, abuse, or misuse, intentionally or unintentionally, of the Spooky and/or Spooky2 frequency generation systems or any of their component parts due to any circumstances beyond our reasonable control. In any case, I, John White, or any of my associates, shall have no other liability.

By using the Spooky and / or Spooky2 frequency generation systems, you, the user, understand and accept that you have no expectation of curing any ailment.

You also understand that possible negative physical and/or mental effects, unknown to us, might result from the use of the Spooky and / or Spooky2 frequency generation systems. Moreover, you intend to undertake only responsible experimentation, and you voluntarily accept all responsibility for the use and application of all frequencies generated by the Spooky and / or Spooky2 systems.

Furthermore, you agree that you will not hold us responsible for any consequences, whether harmful or otherwise, that may occur as a result of using the Spooky and / or Spooky2 frequency generation systems.

Spooky2 Software License

Although the source code is © John White, this software is free, and has been written for the greater benefit and knowledge of all mankind. You are actively encouraged to pass it on freely to everyone you know, as long as it's accompanied by this document

SPOOKY2